

M.V. Arklow Valley

| | | | |
|--------------------|----------------------------|---------------|-----------------------------------|
| Port of Registry | Rotterdam, The Netherlands | Yard | Royal Bodewes Shipyard |
| Call Sign | PBRP | Year of Build | 2016 |
| IMO No. | 9772553 | Class | Bureau Veritas |
| MMSI No | 2448710425 | Class | Class 1, Hull, Mach, |
| | | Notation | AUT-UMS, IWS, Strength bottom, |
| Inmarsat-C (telex) | 424401423 | | Heavy Cargo, General Cargo |
| | 424401424 | | |
| Email | valley@arklowships.nl | Class No. | 278228A |
| Mobile phone | +31655701939 | Official No. | 24353 Z 2016 |
| VSAT phone | +31856661243 | | |



Principal Particulars

| | |
|--------------------------|--------------------|
| Length pp | 84.98m |
| Length | 82.84m |
| Breadth | 15.00m |
| Depth | 7.17m |
| Summer Load Draft (m) | 6.35m |
| Min. airdraft is | 18.25m |
| at max. summer draft of | 6.35m |
| Min. coaming ht above WL | 3.39m |
| GT | 2999t |
| NT | 1731t |
| Displacement | 6541t |
| Total Deadweight | 5170t |
| Ballast | 1870m ³ |
| Fuel – HFO | 109m ³ |
| Fuel – GO | 95m ³ |
| Fresh Water | 32m ³ |
| Lub Oil | 11m ³ |

| | | |
|------------------------------------------------------------------------------------------|----------------|-----------------|
| Hold Capacities | Grain & Bale | |
| | m ³ | ft ³ |
| hold | 6.258 | 221.000 |
| Portable bulkhead may be placed in 8 positions for cargo separation and storage position | | |

| | |
|------------------------------------------------|----------------------|
| Hatches: Coops & Nieborg pontoon system | |
| Maximum hatch top loading | 1.75t/m ² |
| Maximum tank top loading | 15mt/m ² |

Bottom strengthened for loading aground
Tank top strengthened for heavy cargoes

CO₂ fire extinguishing system in hold
Engine room fitted with CO₂ and LAFF
Certified for the carriage of dangerous goods of IMO Class 1.4, 2.1, 2.2, 2.3, 3, 4.1, 4.2, 5.1, 6.1, 8 and 9

Main Engine:
MaK 6M25 1740 kW with Siemens Gearbox and Berg controllable pitch propeller

Auxiliaries:
2 x Sisu Diesel 154kW 1500 rpm

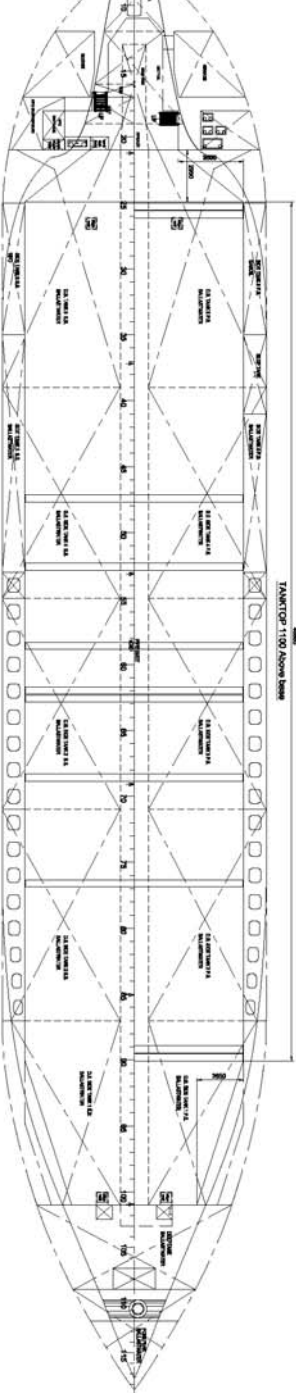
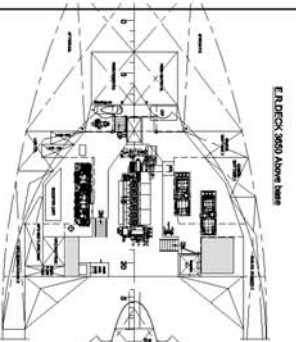
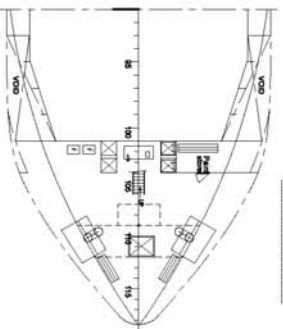
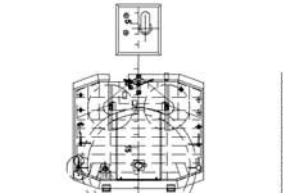
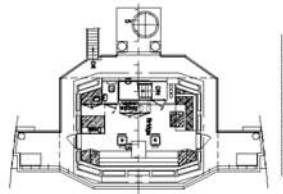
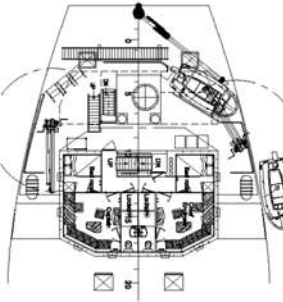
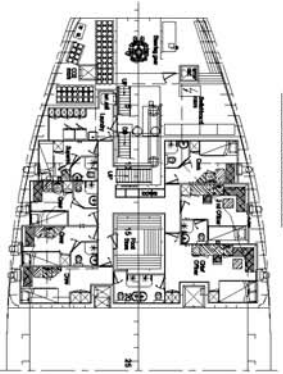
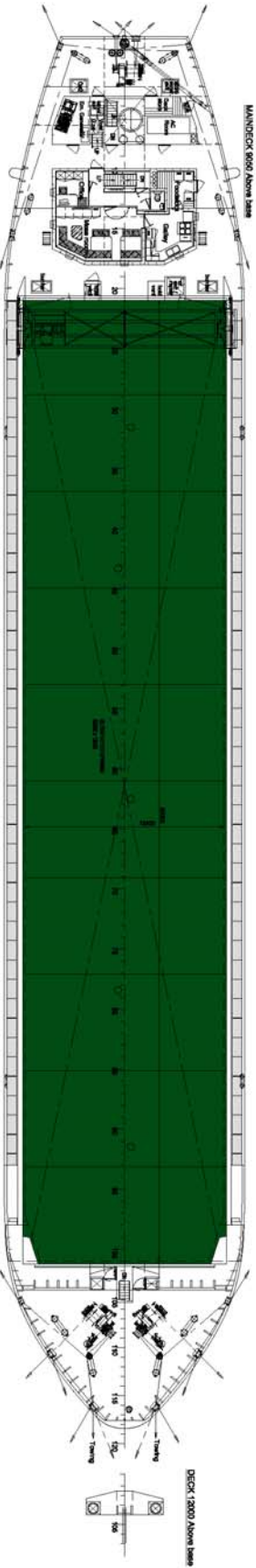
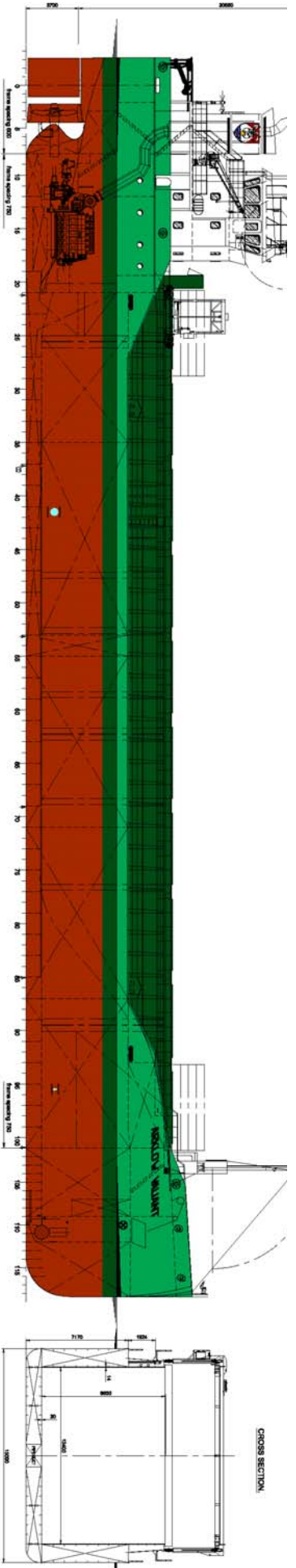
Generators:
2 x Aux generator 154kW
1 x Emergency Generator 66kW
1 x shaft alternator 348kW

Speed: abt. 12.5 knots

Consumption:
In port – abt. 0,5 t Gas Oil per day
At sea – abt. 7 t HFO per day

Equipment
GMDSS (A3), 2x radars, navtex,
Echo sounder, speed/distance log
2x GPS receivers, A/P, ECDIS,
gyro/magnetic compasses,
1x electric bowthruster 300 kW

M.V. ARKLOW VALLEY



MAIN PARTICULARS

| | |
|-----------------------------------|--------------------------|
| Length over all | 86.83 m |
| Length between perpendiculars | 64.80 m |
| Length rec. hullsides | 64.80 m |
| Length (incl. bow) rec. hullsides | 71.55 m |
| Depth | 7.15 m |
| Design draught | 6d1. 8.35 m |
| Displacement | 6d1. 5100 ton |
| Hull capacity | 221 000 dwt |
| Tanktop area | 696 m ² |
| Tonnage (incl. conv./1983) | 2999 GT |
| Tank capacities: Oil | 6d1. 109 m ³ |
| Water | 6d1. 367 m ³ |
| Ballastwater | 6d1. 1870 m ³ |
| Main Engine: MAN 6G2/5 | 1740 kW |
| Tide Signal | 6d1. 12.8.7c |
| * 2. Check/Revised and advised | |

21-09-2016

BODENES

General Arrangement 5102 DWG

723-000-001 10

21-09-2016