

M.V. Arklow View

Port of Registry	Rotterdam, The Netherlands	Yard	Royal Bodewes Shipyard
Call Sign	PDDU	Year of Build	2016
IMO No.	9772539	Class	Bureau Veritas
MMSI No	244870189	Class	Class 1, Hull, Mach,
		Notation	AUT-UMS, IWS, Strength bottom,
Inmarsat-C (telex)	424401278 424401279		Heavy Cargo, General Cargo
Email	aview@ipsignature3.net	Class No.	27826X
GSM telephone (Dutch)	+31646277434	Official No.	00000 Z 2016



Principal Particulars

Length OA	86.93m
Length	82.84m
Breadth	15.00m
Depth	7.17m
Summer Load Draft (m)	6.35m
Min. air draft is	18.25m
at max. summer draft of	6.35m
Min. coaming ht above WL	3.39m
GT	2999t
NT	1731t
Displacement	t
Total Deadweight	5100t
Ballast	1870m ³
Fuel – HFO	109m ³
Fuel – GO	95m ³
Fresh Water	32m ³
Lub Oil	11m ³

Hold Capacities	Grain & Bale	
	m ³	ft ³
hold	6.258	221.000
Portable bulkhead may be placed in 8 positions for cargo separation and storage position		

Hatches: Coops & Nieborg pontoon system		
Maximum hatch top loading	1.75t/m ²	
Maximum tank top loading	15mt/m ²	

Bottom strengthened for loading aground
Tank top strengthened for heavy cargoes

CO₂ fire extinguishing system in hold
Engine room fitted with CO₂ and LAFF
Certified for the carriage of dangerous goods of IMO Class 1.4, 2.1, 2.2, 2.3, 3, 4.1, 4.2, 5.1, 6.1, 8 and 9

Main Engine:

MaK 6M25 1740 kW with Siemens Gearbox and Berg controllable pitch propeller

Auxiliaries:

2 x Sisu Diesel 154kW 1500 rpm

Generators:

2 x Aux generator 154kW

1 x Emergency Generator 66kW

1 x shaft alternator 348kW

Speed: abt. 12.5 knots

Consumption:

In port – abt. 0,5 t Gas Oil per day

At sea – abt. 7 t HFO per day

Equipment

GMDSS (A3), 2x radars, navtex,

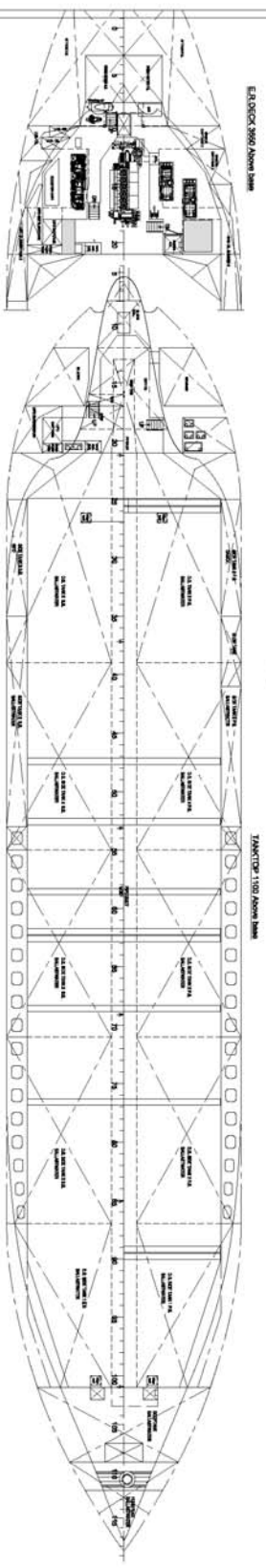
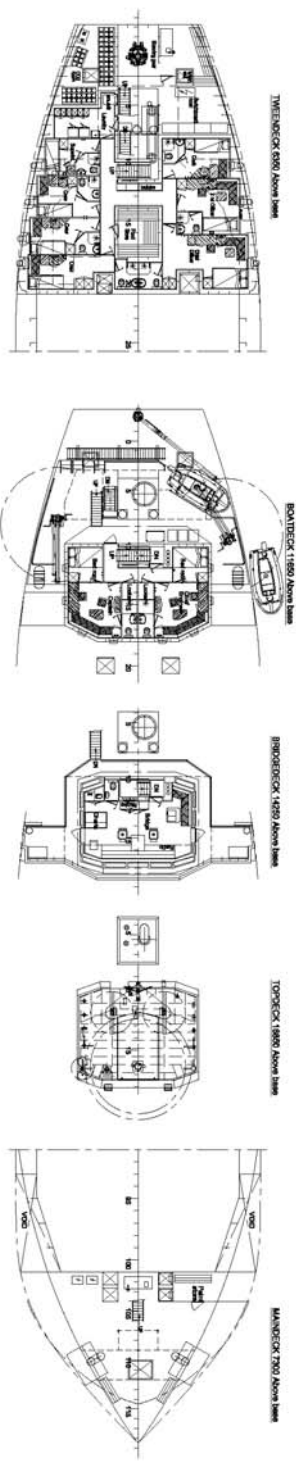
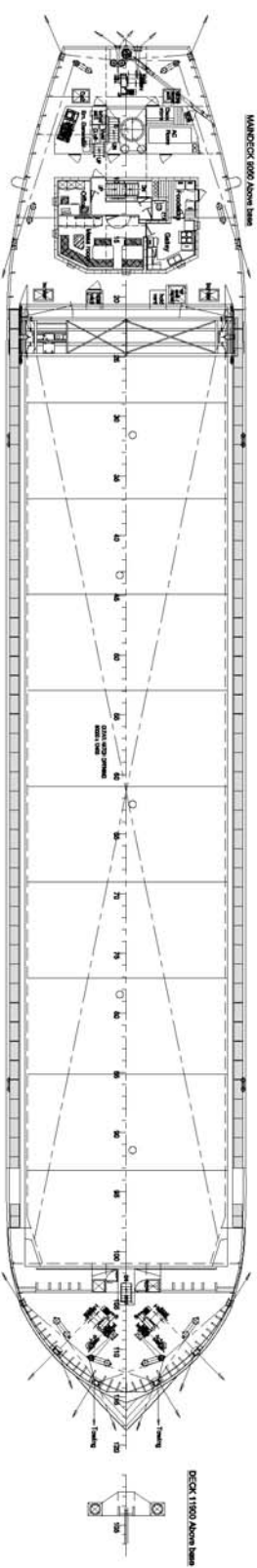
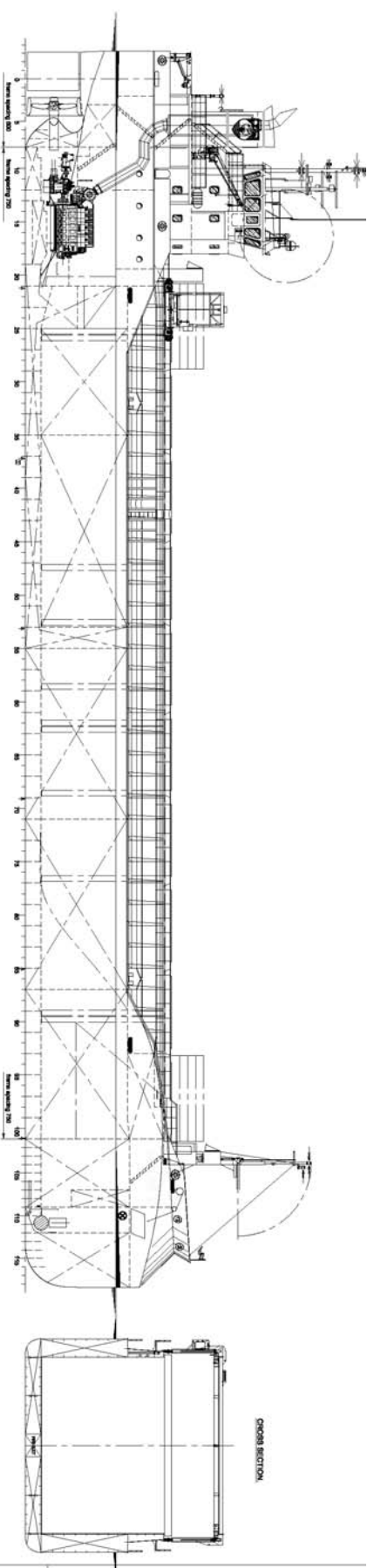
Echo sounder, speed/distance log

2x GPS receivers, A/P, ECDIS,

gyro/magnetic compasses,

1x electric bowthrustrer 300 kW

M.V. ARKLOW VIEW



MAIN PARTICULARS

Length over all 88.00 m.
 Length between perpendiculars 62.50 m.
 Breadth over all 14.50 m.
 Breadth moulded 13.75 m.
 Depth moulded 4.15 m.
 Draught forward 4.15 m.
 Draught aft 4.500 m.
 * Draught amidships 4.15 m.

* Total capacity 297,000 cwt.
 * Gross tonnage 2999 GT.
 * Net tonnage 1980 GT.

Tank capacities: 1170 m³ oil, 108 m³ water, 20 m³ diesel, 20 m³ fuel oil, 20 m³ fresh water, 20 m³ ballast water, 20 m³ bilge water.

Main Engine: MAN B&W 1740 W.
 Total Power: 424.5 kW.

* * * Dimensions in m unless stated

14-04-2015

BOVENIES

General Arrangement (G.A.) Deck Plan

721-000-001 / F

14-04-2015