

SHORT TERM
DOCUMENT OF COMPLIANCE FOR THE CARRIAGE OF DANGEROUS GOODS

No. 100877-R001-014

issued in pursuance of the provisions of Regulation II-2/19.4 of the
INTERNATIONAL CONVENTION FOR SAFETY OF LIFE AT SEA, 1974,
as amended,
under the authority of the Government of the



Ireland

RINA No. 100877

by

RINA SERVICES S.p.A.

Name of ship	Distinctive Number or Letters	Gross Tonnage
ARKLOW RALLY	EIA2288	4145
Port of Registry	Type of ship	IMO Number ¹
ARKLOW	General cargo ship	9923229

THIS IS TO CERTIFY:

1. that the construction and equipment of the above mentioned ship were found to comply with the provisions: of Regulation II-2/19 (*) of the International Convention for the Safety of Life at Sea, 1974, as amended; and,
2. that the ship is suitable for the carriage of those classes of dangerous goods as specified on page 2 of this document, subject to any provisions in the International Maritime Dangerous Goods (IMDG) Code and the International Maritime Solid Bulk Cargoes (IMSBC) Code for individual substances also being complied with.

This Certificate is valid until: **19 November 2023**

Issued at: **Groningen**

on: **19 June 2023**



RINA Alessandro Savarese

IBRAHIM UGUR AYDIN

RINA SERVICES S.p.A.

¹ In accordance with the IMO Ship Identification Number Scheme, adopted by the Organization by resolution A.600(15).

(*) There are no special requirements in the above mentioned Regulation II-2/19, for the carriage of dangerous goods of classes 6.2 and 7, and for the carriage of dangerous goods in limited quantities as required in chapter 3.4 of the IMDG Code, and excepted quantities as required in chapter 3.5 of the IMDG Code

CARGO SPACES ARE IDENTIFIED ON HOLD PLAN OF PAGE 3 WITH INDICATION OF RELEVANT GROUP

CLASS	GROUP OF CARGO SPACES WITH SAME CLASSES ALLOWED					
	A	B	C	D	E	F
1.1+1.6 Explosives	X	X	P	-	-	-
1.4 S Explosives	P	P	P	-	-	-
2.1 Flammable gases	X	X	P	-	-	-
2.2 Non-flammable, non-toxic gases	P	P	P	-	-	-
2.3 Toxic gases (flammable)	P	P	P	-	-	-
2.3 Toxic gases (non flammable)	P	P	P	-	-	-
3 Flammable liquids (fp <23°C c.c.)	P	P	P	-	-	-
3 Flammable liquids (fp 23°C+60°C c.c.)	P	P	P	-	-	-
4.1 Flammable solids	P	P	P	-	-	-
4.2 Spontaneous combustion substances	A	A	P	-	-	-
4.3 Water reactive substances (liquids)	P	P	P	-	-	-
4.3 Water reactive substances (solids)	A	A	P	-	-	-
5.1 Oxidizing substances	A	A	P	-	-	-
5.2 Organic peroxides	X	X	P	-	-	-
6.1 Toxic substances (liquids)	P	P	P	-	-	-
6.1 Toxic substances (liquids fp <23°C c.c.)	P	P	P	-	-	-
6.1 Toxic substances (liquids fp 23°C+60°C c.c.)	P	P	P	-	-	-
6.1 Toxic substances (solids)	A	A	P	-	-	-
8 Corrosive substances (liquids)	P	P	P	-	-	-
8 Corrosive substances (liquids fp <23°C c.c.)	P	P	P	-	-	-
8 Corrosive substances (liquids fp 23°C+60°C c.c.)	P	P	P	-	-	-
8 Corrosive substances (solids)	A	A	P	-	-	-
9 Miscellaneous dangerous substances	A	A	P	-	-	-

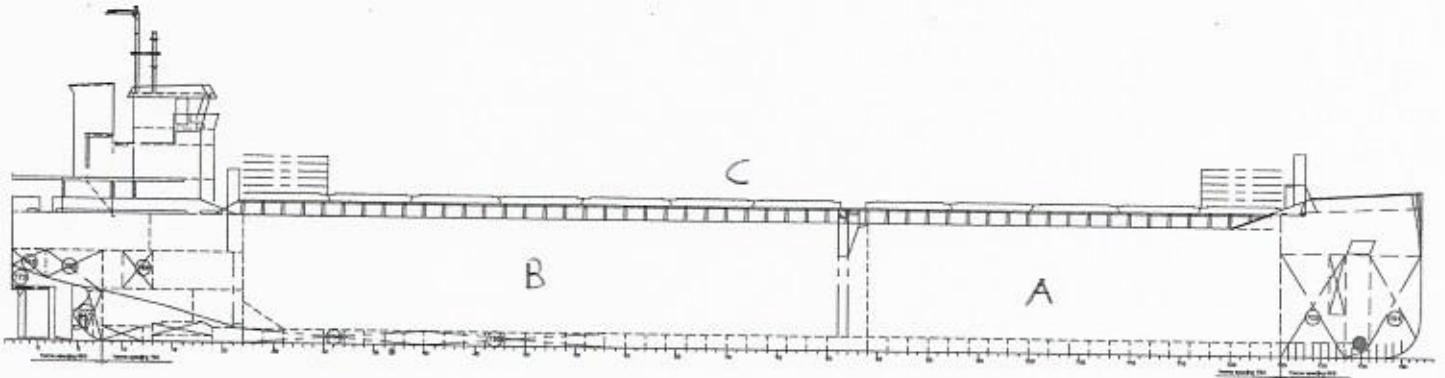
P = In packaged form;

A = In packaged form and in bulk (*);

X = not allowed

(*) Cargoes in bulk are listed individually by name and class in the attached sheet.

CARGO SPACES WITH INDICATION OF RELEVANT GROUP



Group	Description of cargo spaces belonging to the same group with same classes allowed
A	Cargo Hold No.1
B	Cargo Hold No.2
C	Weather deck
D	
E	
F	

NOTES

1	Goods of class 1 (except class 1.4 S) to be stowed not less than a horizontal distance of 12 m from living quarters, life saving appliances and area with public access. Goods of class 1 shall not be stowed within an horizontal distance of 6 m from potential sources of ignitions. Goods of class 1 (except class 1.4 S) are to be stowed 3 m horizontally from the machinery space boundary in all cases.
2	Devices that have no sufficient electrical safety characteristics to be isolated for the transport of these classes of dangerous goods (cargo hold lights).

ENDORSEMENT FOR ANNUAL SURVEYS

THIS IS TO CERTIFY: that, at the annual survey required, the ship was found to comply with the relevant provisions of SOLAS 74 as amended.

Annual survey Place Date	Signature and seal
Annual survey Place Date	Signature and seal
Annual survey Place Date	Signature and seal
Annual survey Place Date	Signature and seal