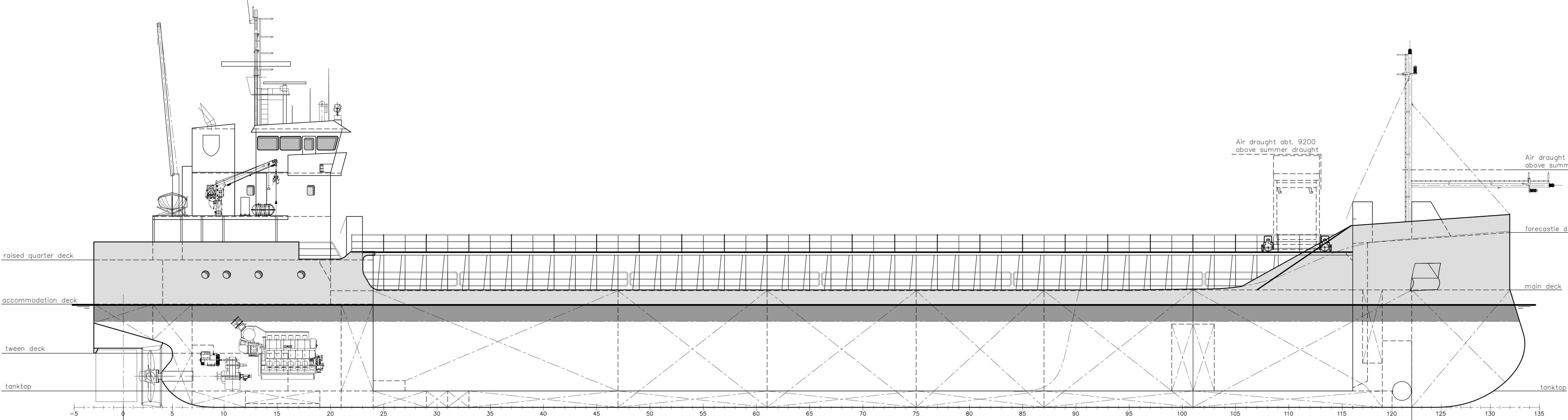
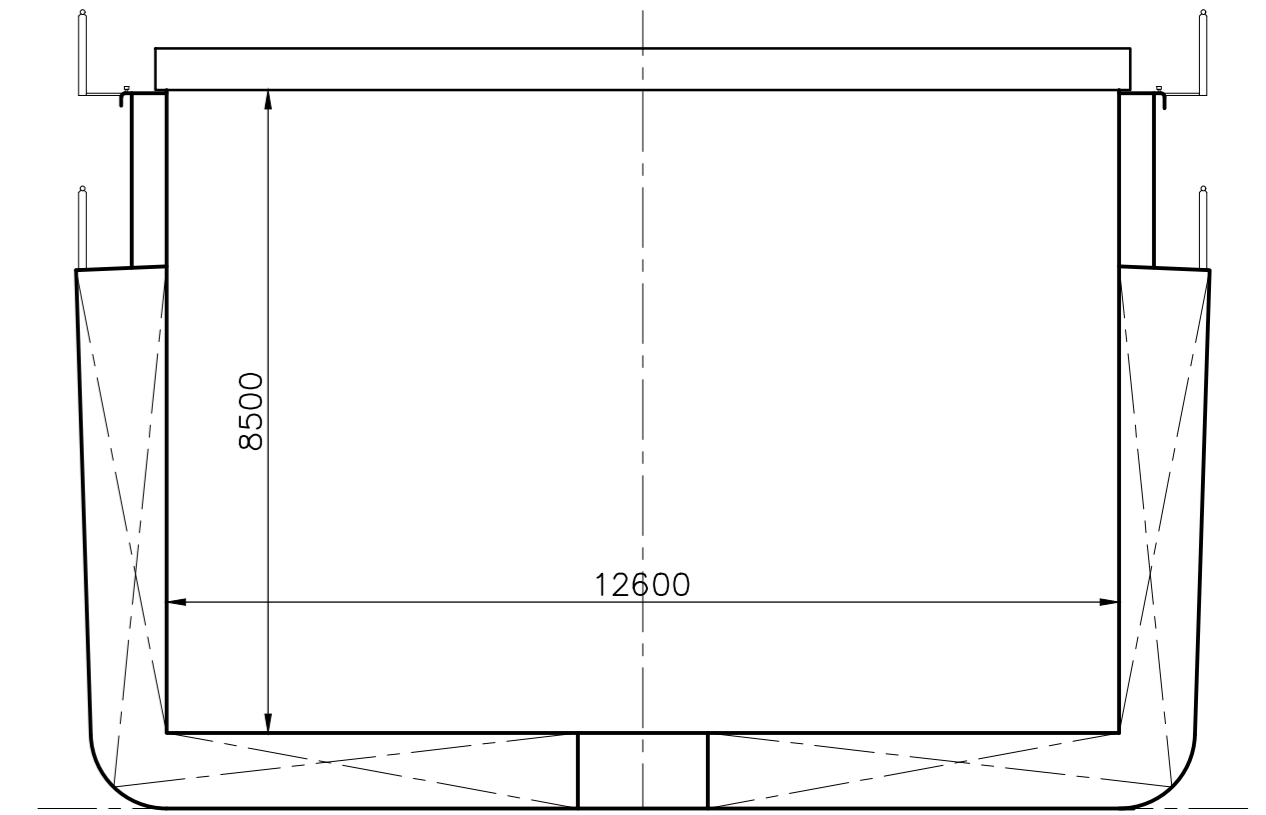


Air draught 21.4m above ballast draught (T=4m)

Air draught abt. 9200 above summer draught

Air draught abt. 8250 above summer draught

CROSS SECTION



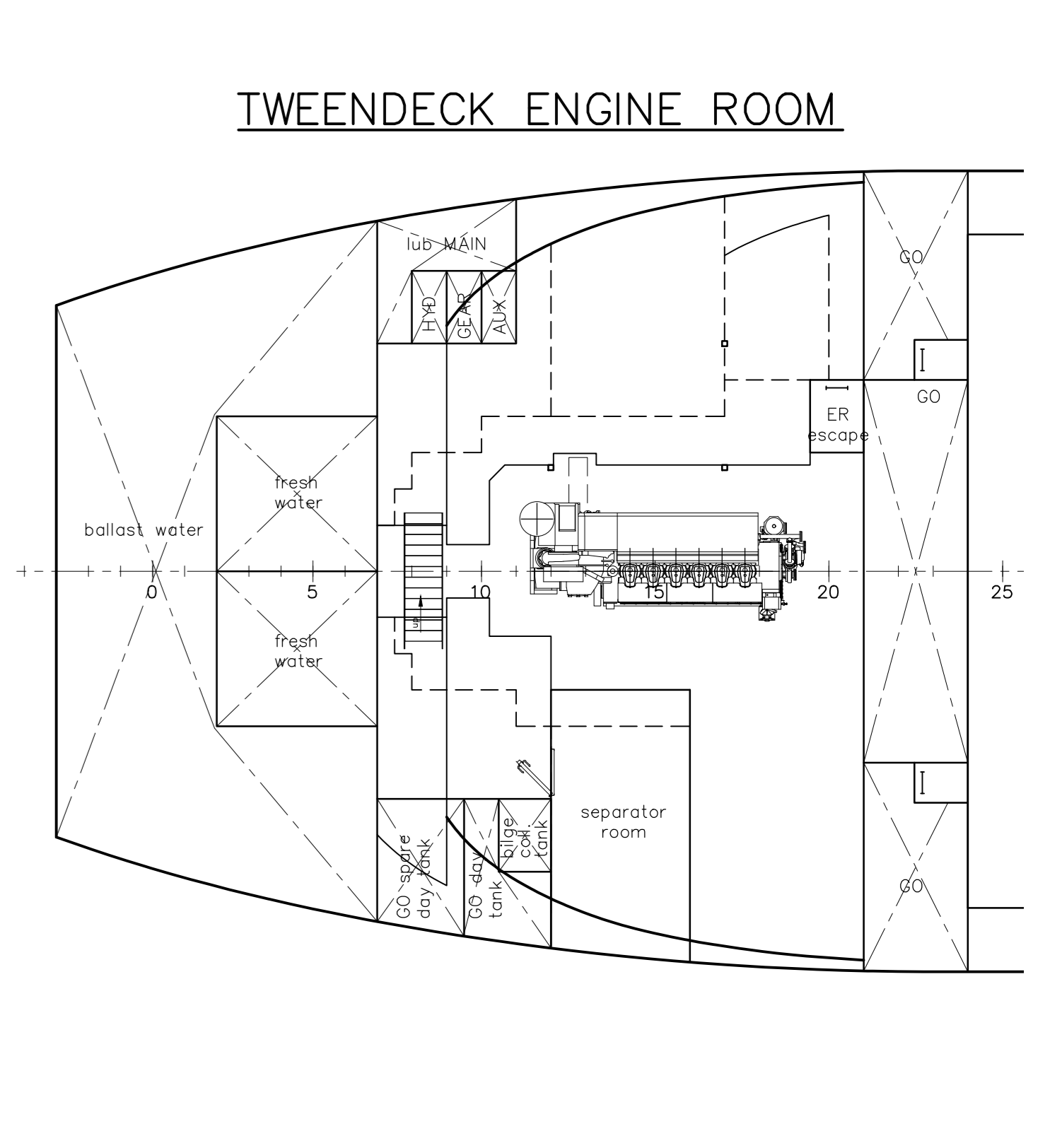
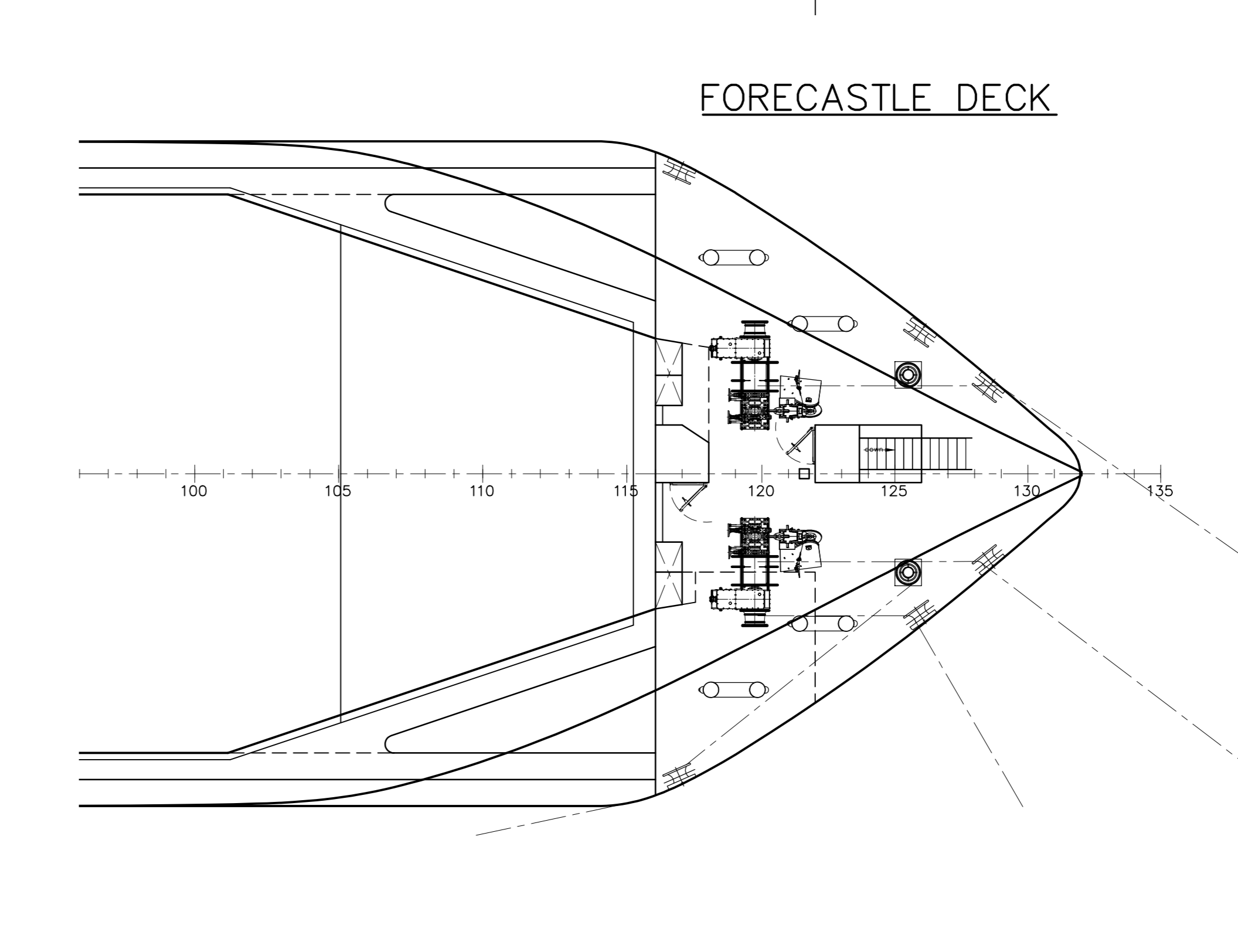
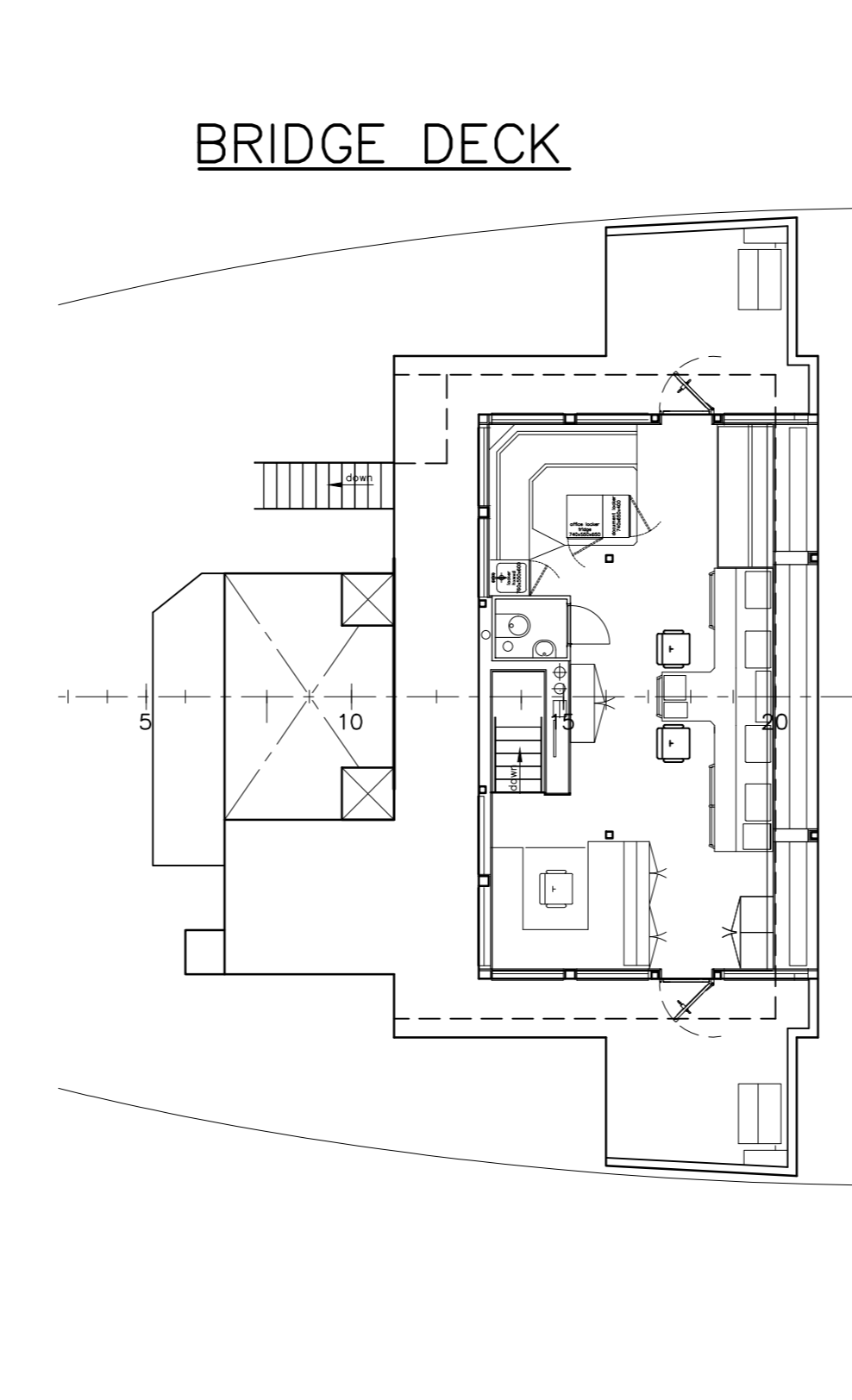
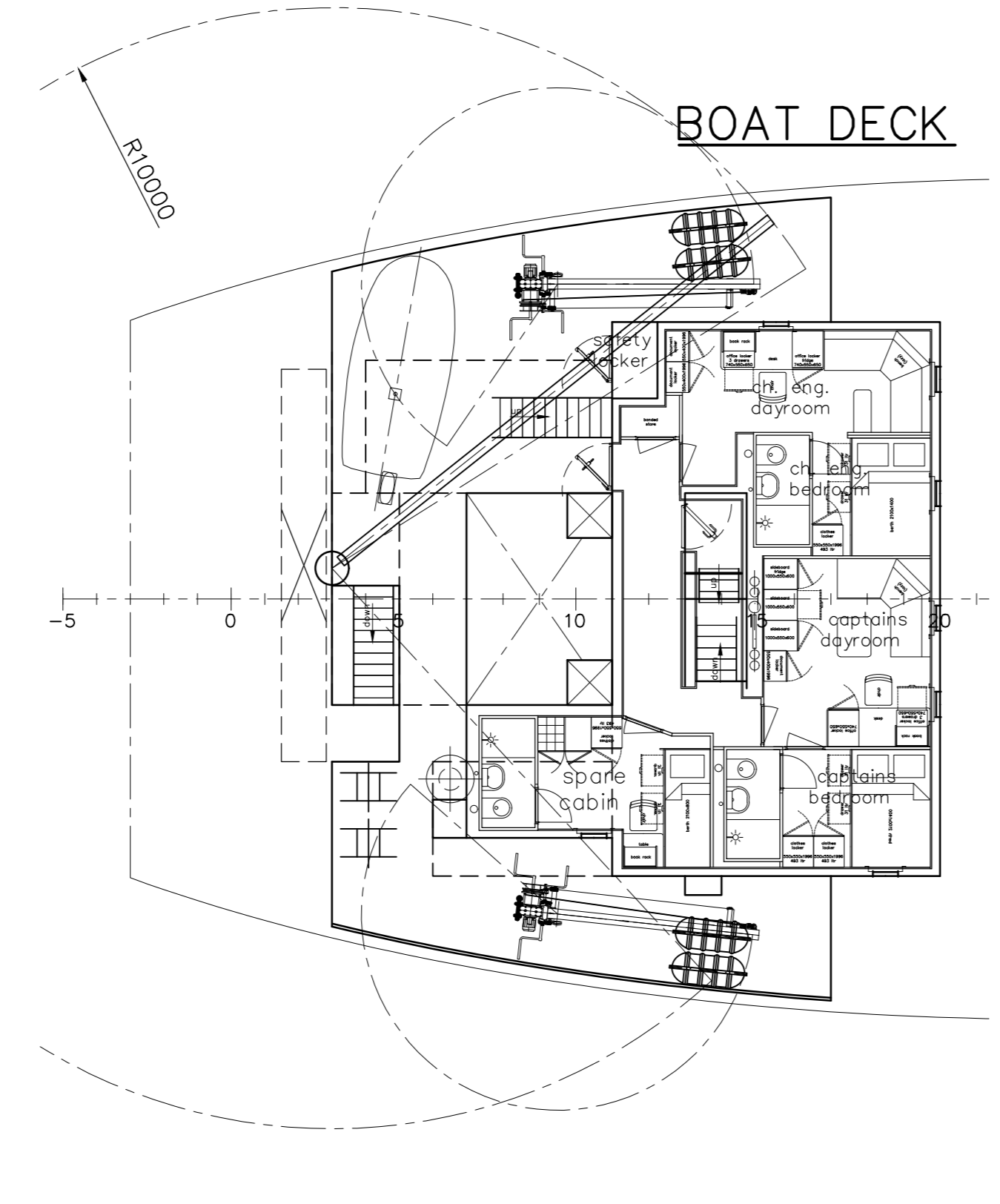
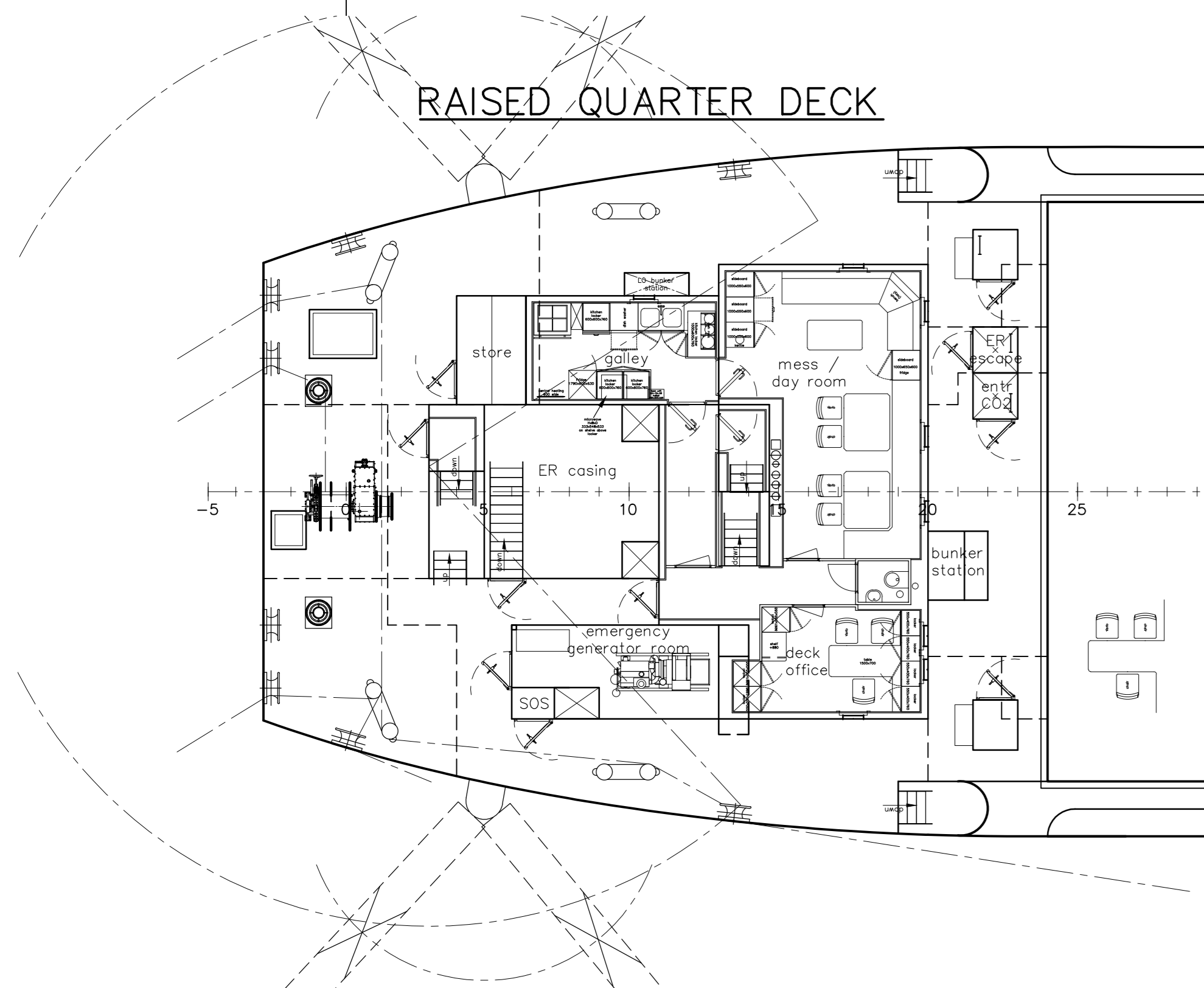
RAISED QUARTER DECK

BOAT DECK

BRIDGE DECK

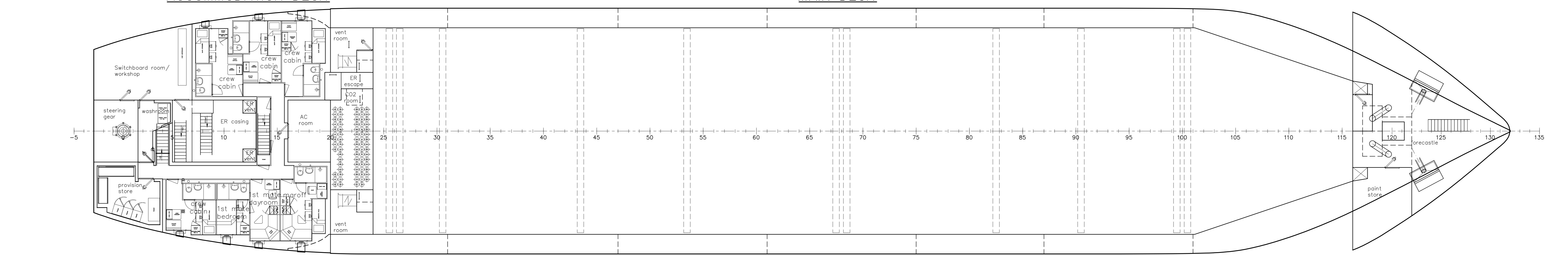
FORECASTLE DECK

TWEEDECK ENGINE ROOM

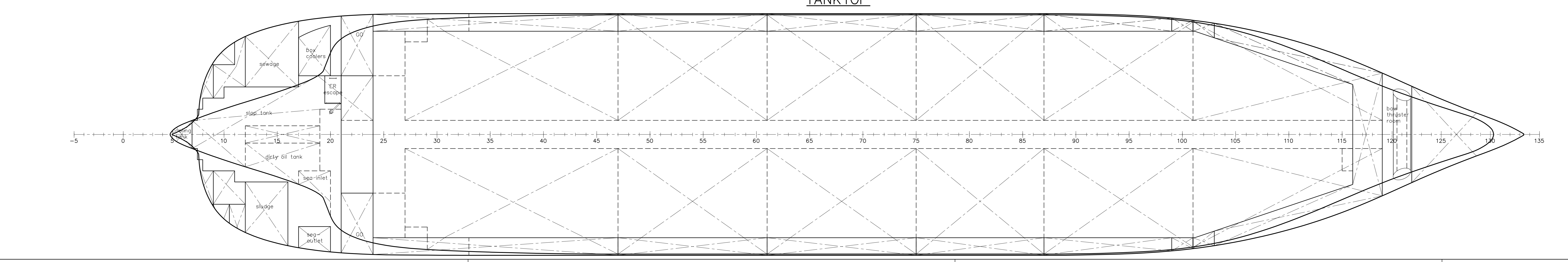


ACCOMMODATION DECK

MAIN DECK



TANKTOP



GENERAL PARTICULARS

Length o.a.	87.400	m
Length l.l.	84.990	m (Load Line)
Breadth	14.990	m (moulded)
Depth	7.120	m (moulded)
Draught	6.260	m (moulded)
Deadweight	pending	DWT
Cargo Hold Volume abt.	216750	cuft
Power	1600	kw (100%)

A	compartment update	24-05-2022
NO.	ALTERATION	DATE

SHIPYARD FERUS SMIT B.V.
 Westerbroek / Leer

P.O.Box 147
 9600 AC Hoogezand
 The Netherlands

Tel. +31-(0)50-4042555
 Fax +31-(0)50-4042500
 Web www.ferus-smit.nl

GENERAL ARRANGEMENT

SCALE	1:100	YARD NO.	454	TYPE	3000GT
DATE	02-05-2022	IMO NO.	n.a.	DRWG.	FS 01-100-1
FORMAT	AO	© COPYRIGHT BY SHIPYARD FERUS SMIT B.V.			