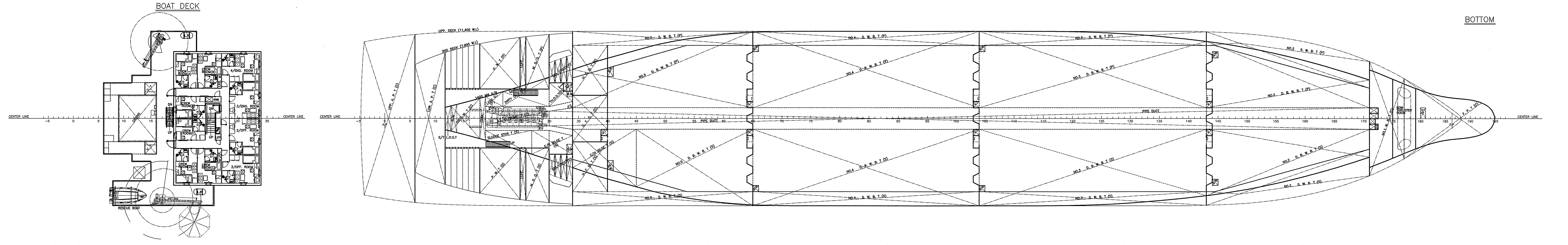
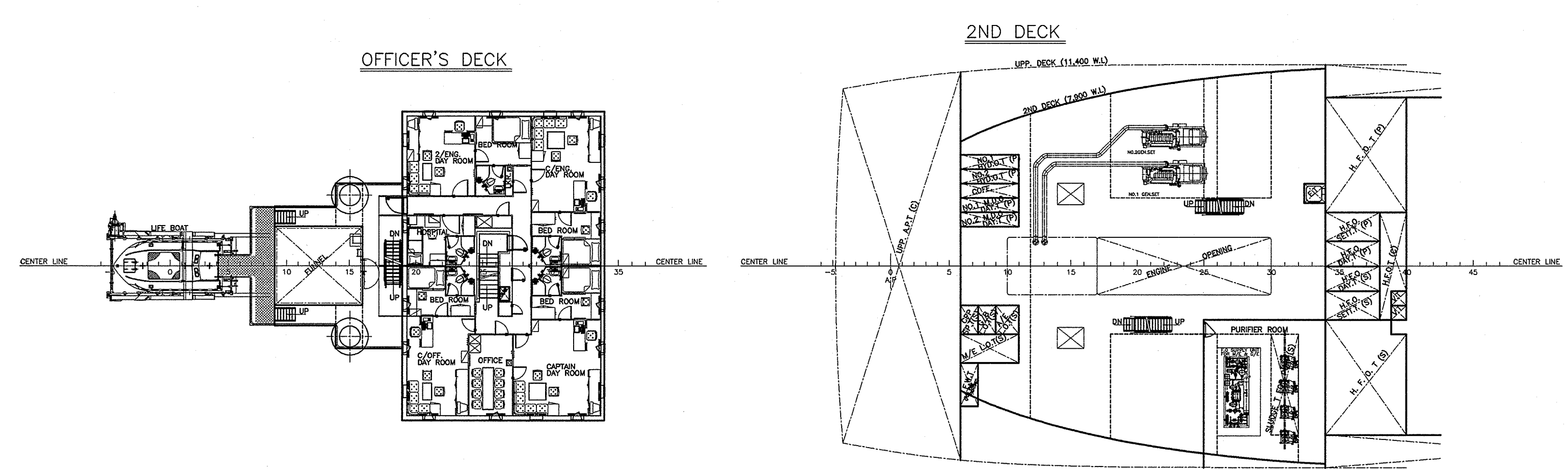
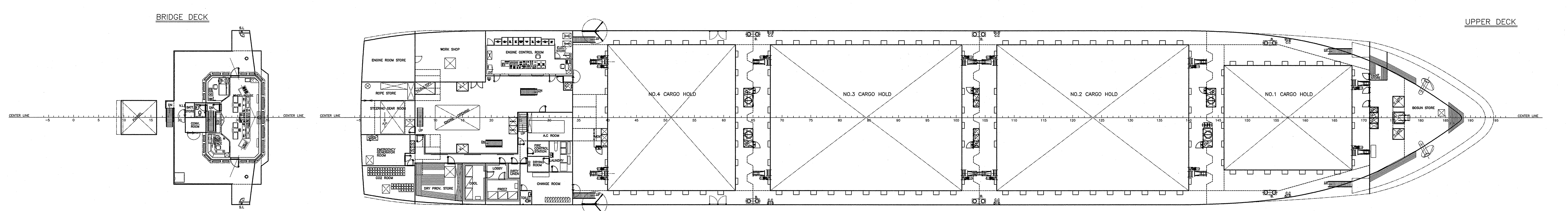
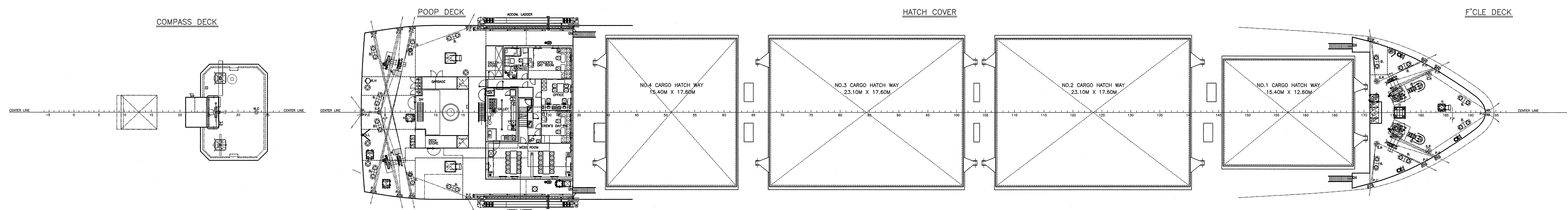
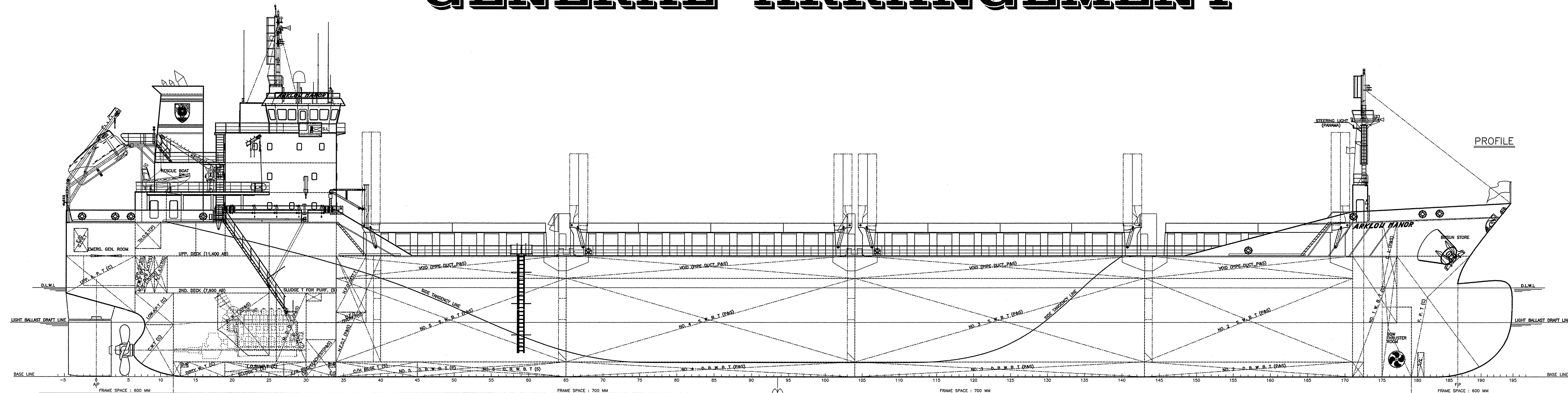
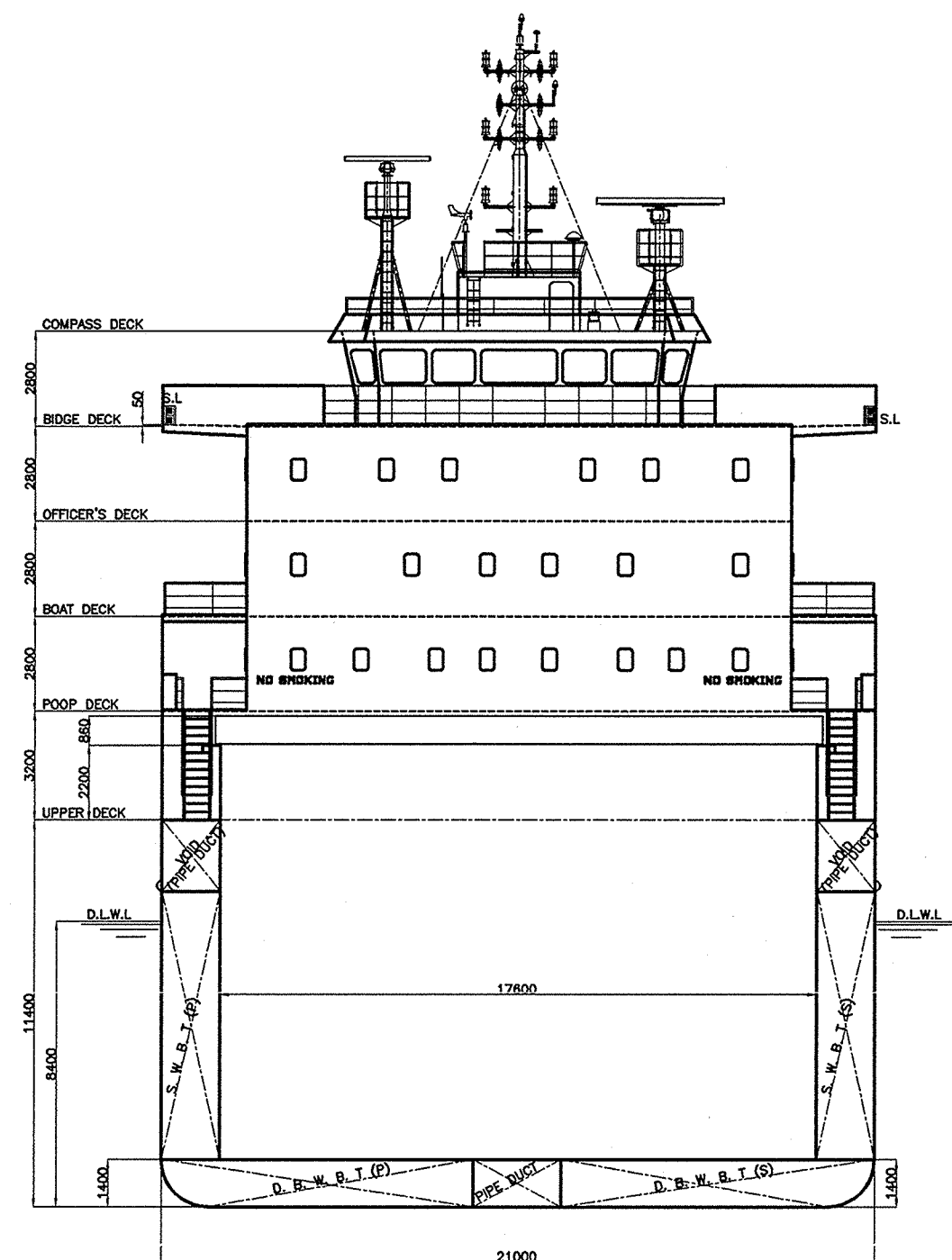


GENERAL ARRANGEMENT

PLAN HISTORY						
DATE	REV. NO.	DESCRIPTION	DWN	CHK	APP	REMARK
2009. 07. 29	A	FINAL DWG.				



PRINCIPAL PARTICULARS

LENGTH O. A.	Abt. 136.474 M
LENGTH B. P.	128.500 M
BREADTH (M.L.D.)	21.000 M
DEPTH (M.L.D.)	11.400 M
DRAFT (M.L.D.) D.L.W.L.	8.400 M
DRAFT (M.L.D.) SCANTLING	8.480 M
GROSS TONNAGE	Abt. 9,750 T
DEAD WEIGHT (at D.L.W.L.)	Abt. 14,250 T
(at SCANTLING)	Abt. 14,450 T
MAIN ENGINE	MAK 6M43C x 1 SET
MCR	5,400 KW x 500 RPM
NCR (85% of MCR)	4,590 KW x 500 RPM
SPEED (SERVICE)	Abt. 14.50 KTS
COMPLEMENT	16 PERSONS
CLASSIFICATION : BUREAU VERITAS (B.V.)	
1+HULL, GENERAL CARGO SHIP,	
HEAVY CARGO (CARGO HOLDS, 196.2kN/m ²)	
UNRESTRICTED NAVIGATION, INWATERSURVEY	
+MACH, AUT-UMS, MON-SHAFT	

IMO SHIP IDENTIFICATION NUMBER	
HULL NO.	MS07-189
IMO NO.	9440241
OWNER	ARKLOW SHIPPING LIMITED.
HELL NO.	MS07-189
PROJ. NAME	14,200 DWT GENERAL CARGO VESSEL
APP BY	H. W. LEE
TITLE	GENERAL ARRANGEMENT
APP BY	O. Y. KWON
CHK BY	
DWN BY (TEL)	K. D. CHOO(1023)
PROJ. NO.	2007-S008
DATE	2009. 07. 29
SCALE	1/200
DWG. NO.	1600-002
REV. NO.	A
BUILDER	MOKPO SHIPBUILDING INDUSTRY CO., LTD.
DESIGNER	KIMS KOREA MARITIME SERVICES CO., LTD.