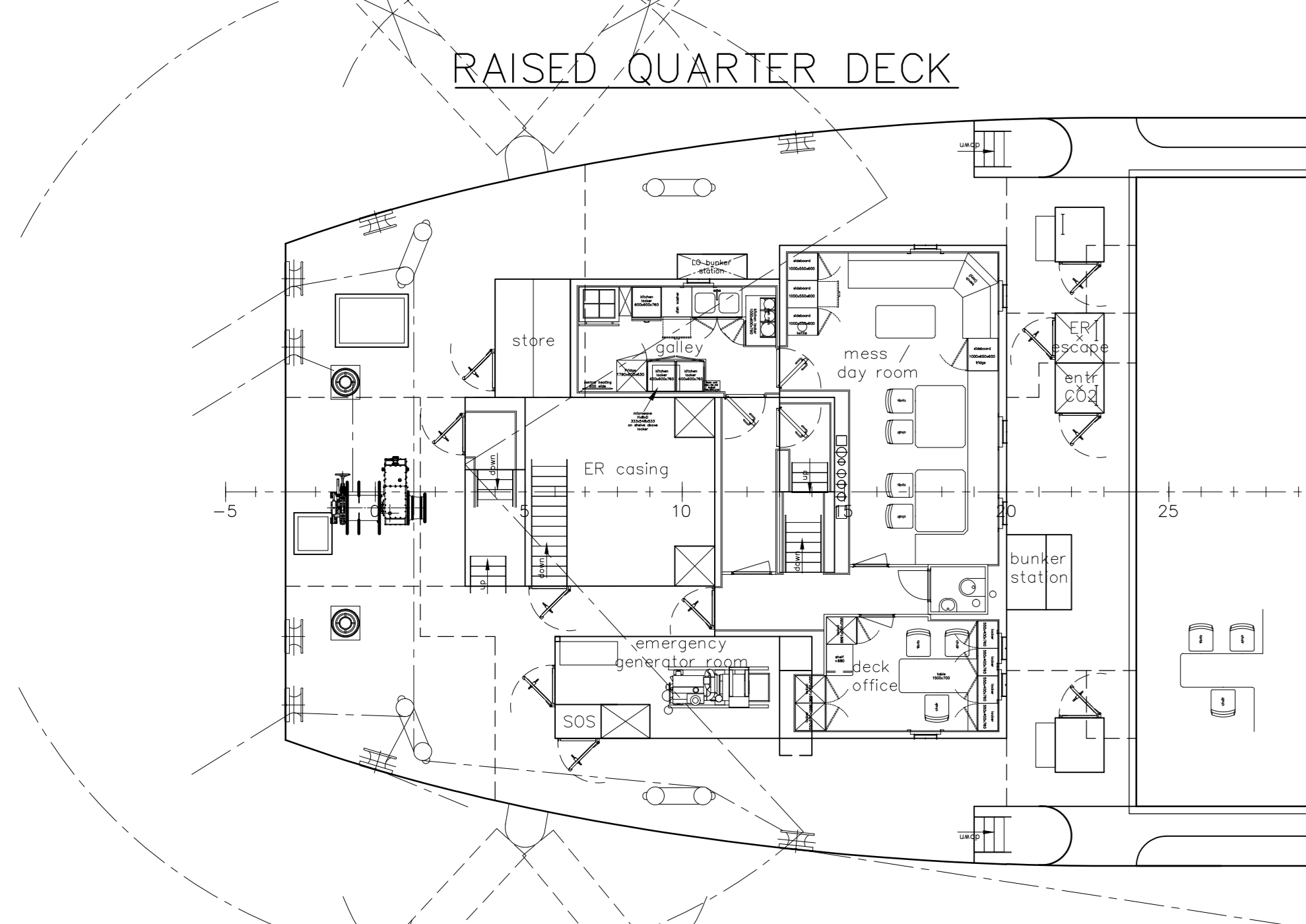
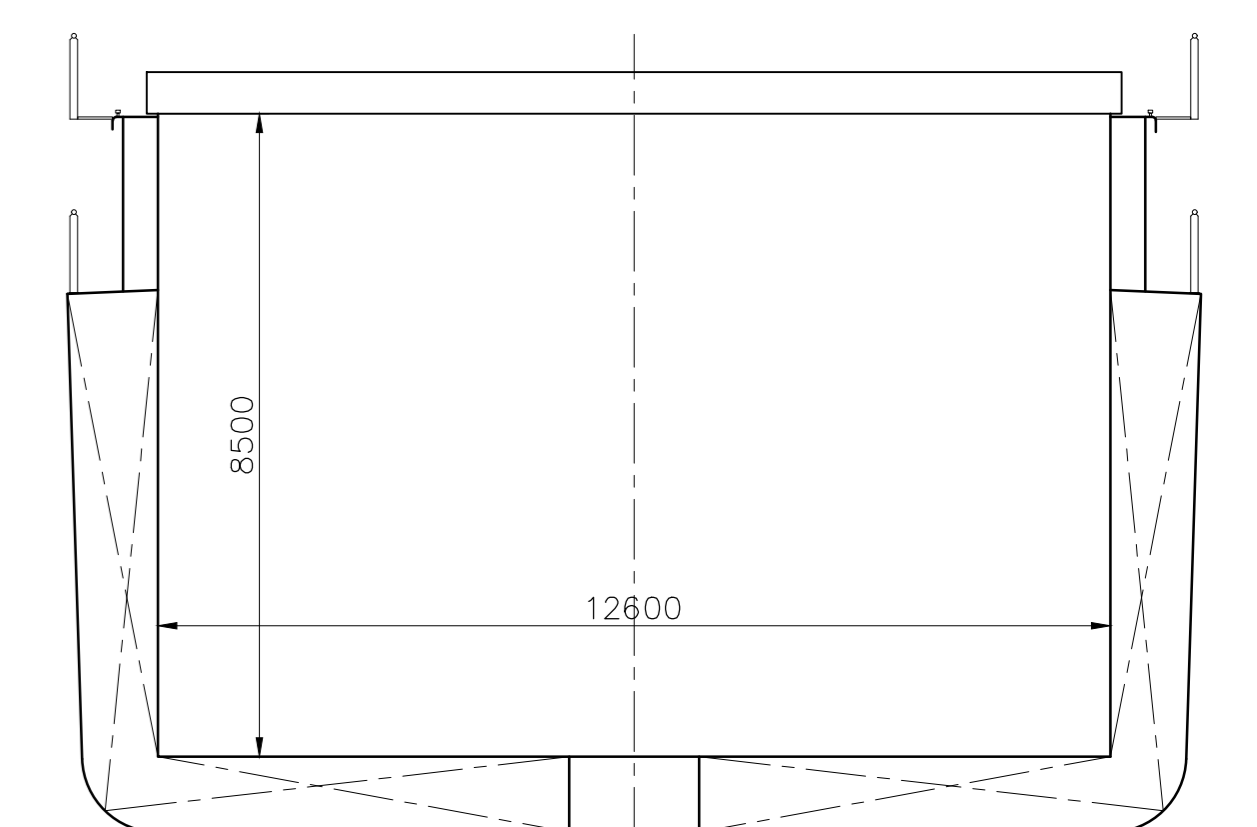
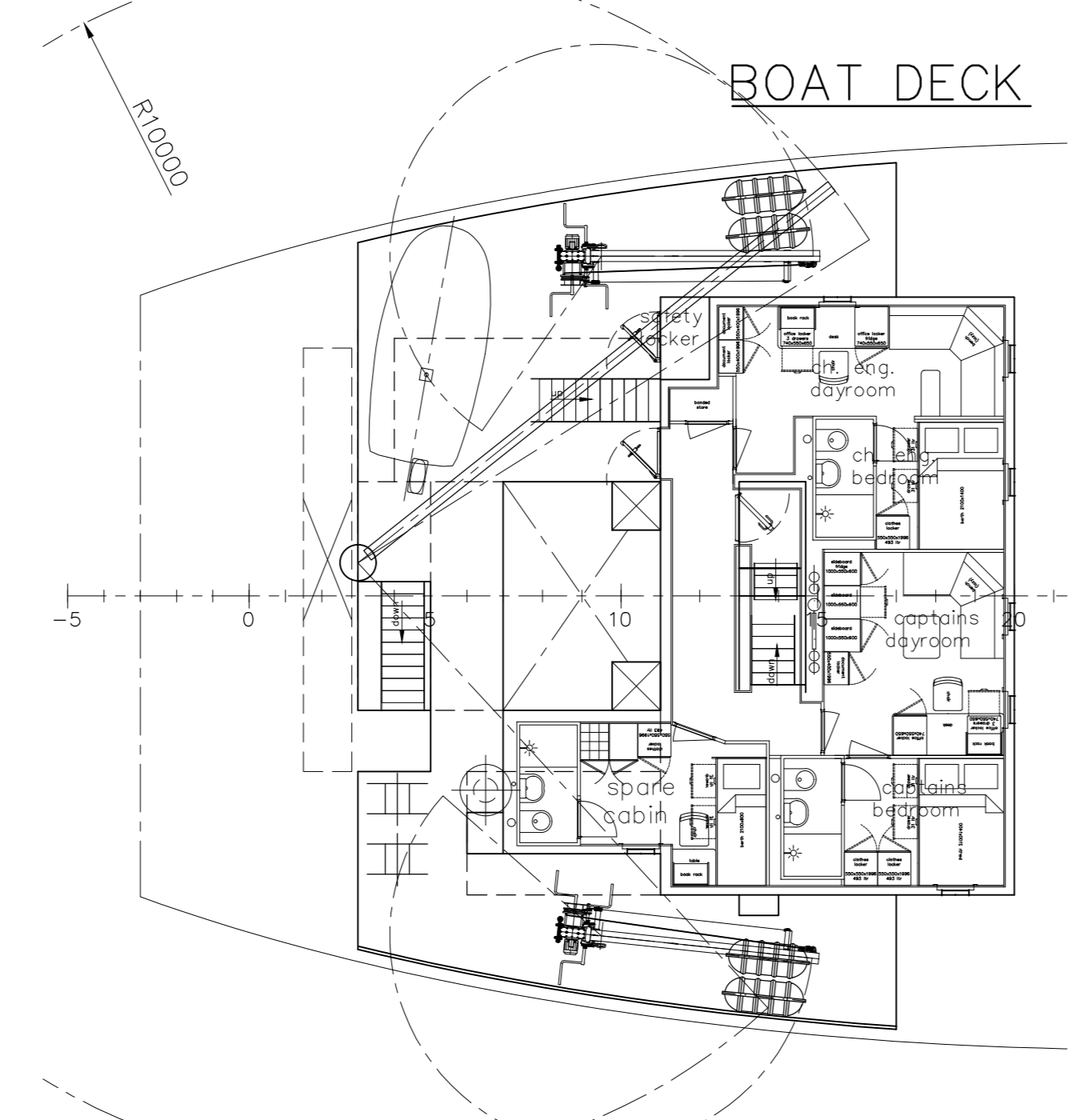


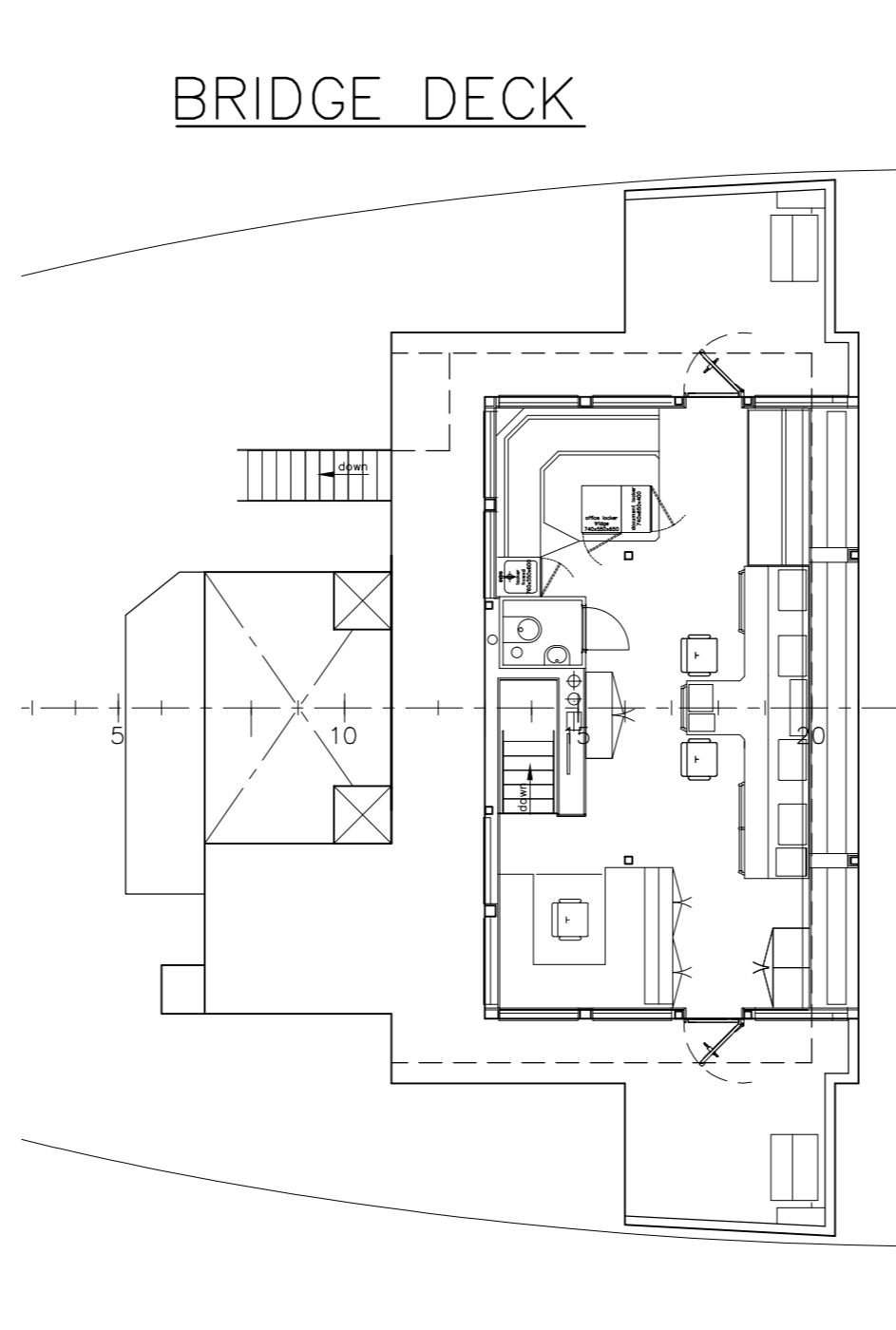
CROSS SECTION



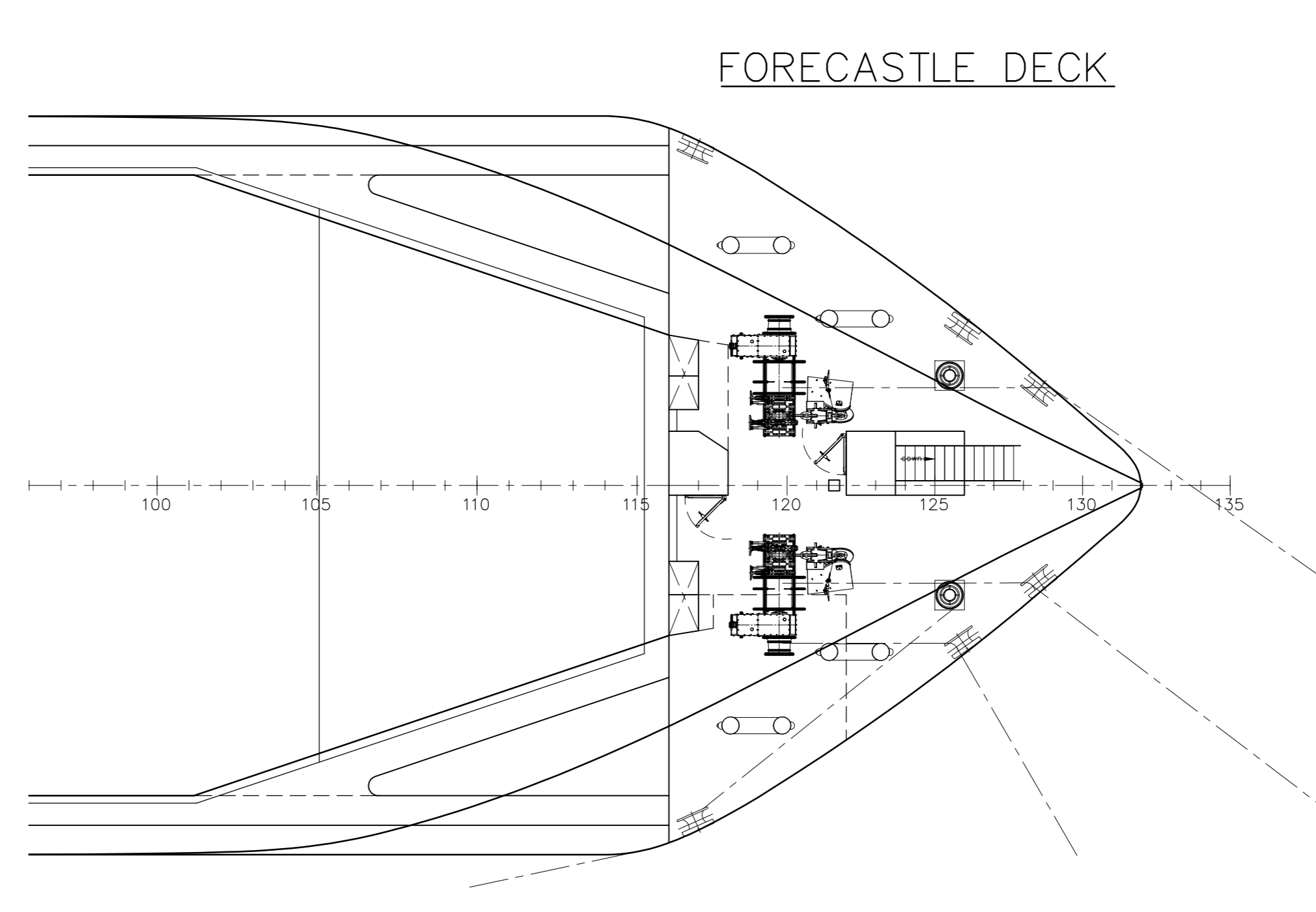
RAISED QUARTER DECK



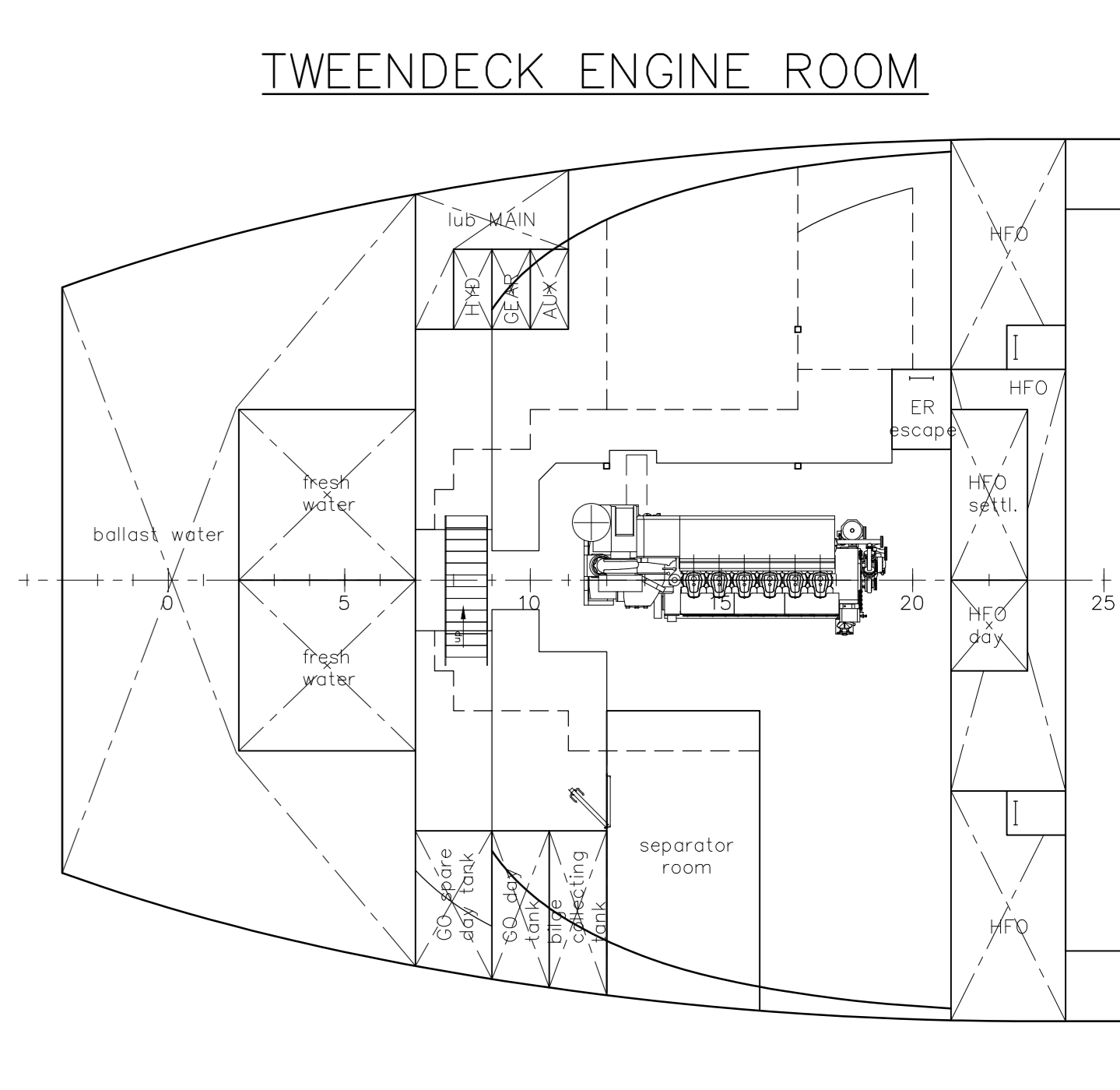
BOAT DECK



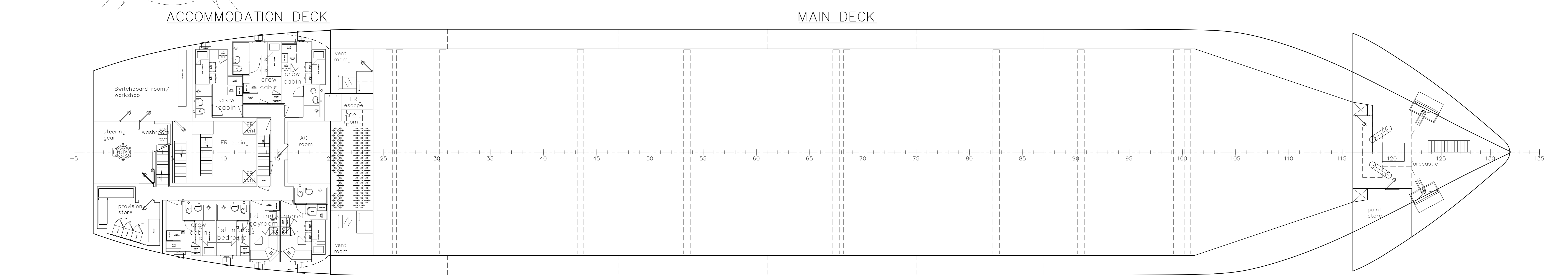
BRIDGE DECK



FORECASTLE DECK

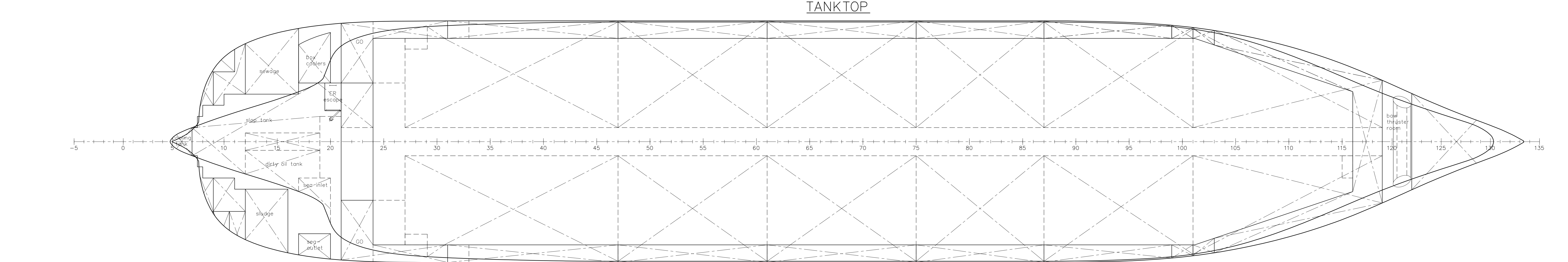


TWEENDECK ENGINE ROOM



ACCOMMODATION DECK

MAIN DECK



TANKTOP

GENERAL PARTICULARS

Length o.a.	87.400	m
Length l.l.	84.990	m (Load Line)
Breadth	14.990	m (moulded)
Depth	7.120	m (moulded)
Draught	6.260	m (moulded)
Deadweight	pending	DWT
Cargo Hold Volume abt.	216750	cuft
Power	1600	kW (100%)

NO.	ALTERATION	DATE
<b>SHIPYARD FERUS SMT B.V.</b> Westerbroek / Leer		
P.O.Box 147 9600 AC, Hoogezand The Netherlands	Tel. +31-(0)50-4042555 Fax +31-(0)50-4042500 Web www.ferus-smt.nl	
<b>GENERAL PLAN</b>		
SCALE	1:100	YARD NO. 457
DATE	13-09-2022	IMO NO. n.a.
FORMAT	AO	DRWG. FS 01-100-1
© COPYRIGHT BY SHIPYARD FERUS SMT B.V.		