

**DOCUMENT OF COMPLIANCE****Special Requirements for Ships carrying Dangerous Goods**

Issued in pursuance of the requirement of Regulation II-2/19.4 of the  
International Convention for the Safety of Life at Sea, 1974, as amended  
under the authority of the Government of

**GOVERNMENT OF IRELAND**

By BUREAU VERITAS MARINE & OFFSHORE

Name of Ship BV No : <b>12643U</b>	Distinctive Number or Letters	Port of Registry	Ship Type	IMO Number
<b>ARKLOW MEADOW</b>	EIJQ7 404070	ARKLOW	General cargo ship	9440277

**THIS IS TO CERTIFY:**

1. That the construction and equipment of the above mentioned ship was found to comply with the provisions of Regulation II-2/19.3 as applicable according to II-2/1.2.4 of the International Convention for the Safety of Life at Sea, 1974, as amended; and
2. That the ship is suitable for carriage of those classes of dangerous goods as specified in the appendix hereto, subject to any provisions in the International Maritime Dangerous Goods (IMDG) Code and the International Maritime Solid Bulk Cargoes (IMSBC) Code for individual substances also being complied with.

This document is valid until **15 September 2030**

Completion date of the survey on which this certificate is based : 05 September 2025

Issued at Rotterdam, The Netherlands, on the 05 September 2025

**BUREAU VERITAS  
MARINE & OFFSHORE**

R. Roeleveld



This document is electronically signed and does not require a manual signature as defined in IMO guideline FAL.5-Circ.39.

[Click here for the verification website](#)



By Order of the Secretary

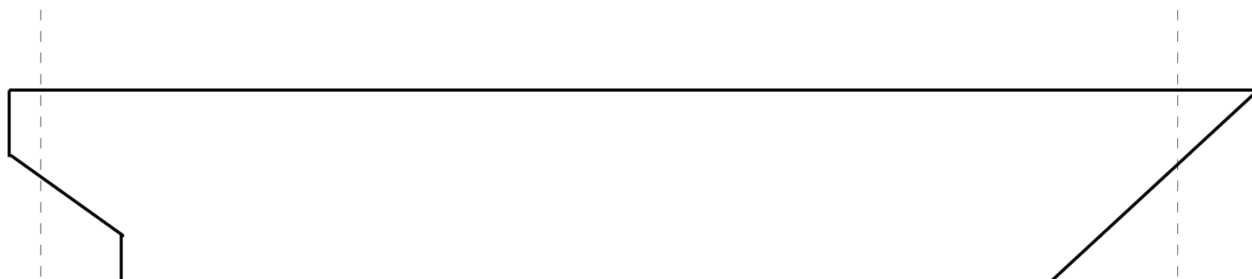
*Note : There are no special requirements in above mentioned Regulation II-2/19 for the carriage of dangerous goods of Classes 6.2 and 7 and for the carriage of dangerous goods in limited quantities, as required in Chapter 3.4 of the IMDG Code, and excepted quantities, as required in chapter 3.5 of the IMDG Code.*

**APPENDIX TO DOCUMENT OF COMPLIANCE**

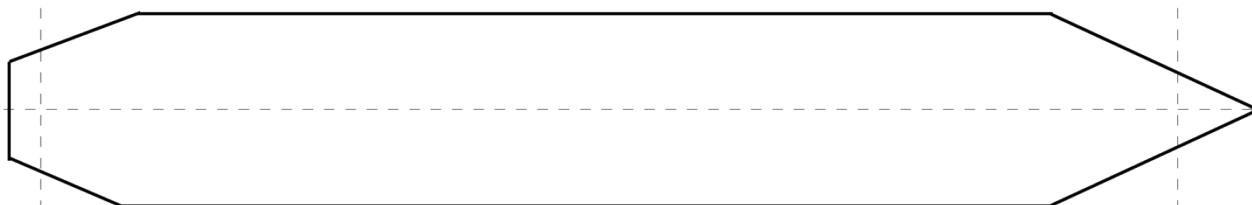
**No: RTD0/OMZ/20250904191854**

**SPACES TO BE INDICATED IN PLAN WITH NUMBERS  
CORRESPONDING WITH TABLE**

Name of Ship BV No : <b>12643U</b>	Distinctive Number or Letters	Port of Registry	Ship Type	IMO Number
<b>ARKLOW MEADOW</b>	EIJQ7 404070	ARKLOW	General cargo ship	9440277

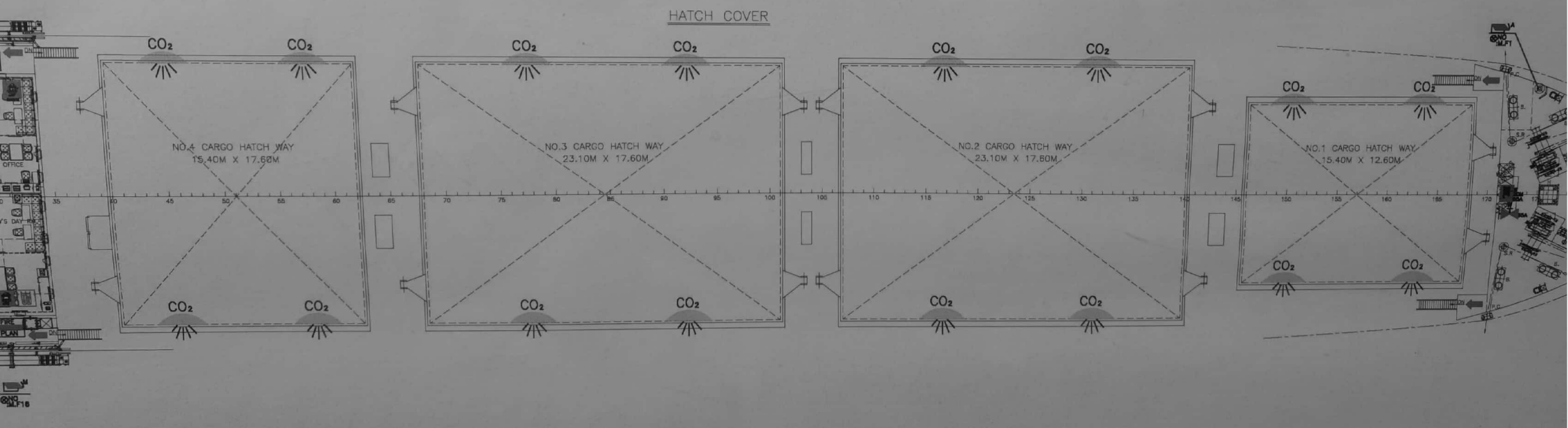
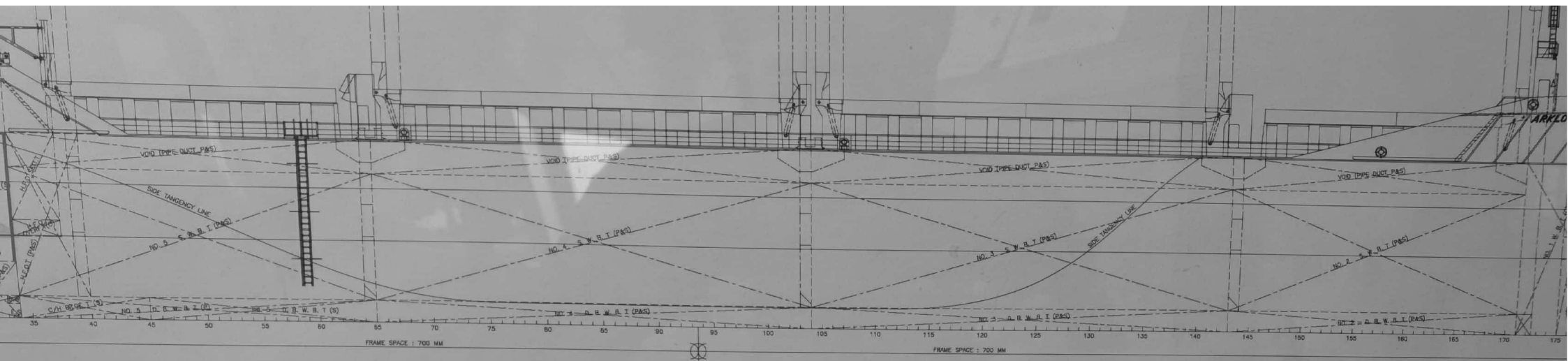


**UNDERDECK SPACES**



**ON DECK SPACES**

See attached plan in annex



DOCUMENT OF COMPLIANCE : RTD0/OMZ/20250904191854

NAME OF SHIP : ARKLOW MEADOW

BV REGISTER : 12643U

Caption used in the next table(s) for the carriage of goods:

**A** indicates PACKAGED and BULK GOODS ALLOWED

**P** indicates PACKAGED GOODS PERMITTED

**B** indicates BULK GOODS PERMITTED

**X** NOT ALLOWED

Classes	Spaces	Hold No.1	Hold No.2	Hold No.3	Hold No.4
1.1 to 1.6		X	X	X	X
1.4S		P	P	P	P
2.1		P <sub>1</sub>	P <sub>1</sub>	P <sub>1</sub>	P <sub>1</sub>
2.2		P	P	P	P
2.3 Flammable		P <sub>1,2</sub>	P <sub>1,2</sub>	P <sub>1,2</sub>	P <sub>1,2</sub>
2.3 non-flammable		P	P	P	P
3 FP<23°C		X	X	X	X
3 23≤FP≤60 °C		P	P	P	P
4.1		A <sub>3</sub>	A <sub>3</sub>	A <sub>3</sub>	A <sub>3</sub>
4.2		A <sub>3</sub>	A <sub>3</sub>	A <sub>3</sub>	A <sub>3</sub>
4.3 liquids		P <sub>1,4</sub>	P <sub>1,4</sub>	P <sub>1,4</sub>	P <sub>1,4</sub>
4.3 solids		A <sub>3</sub>	A <sub>3</sub>	A <sub>3</sub>	A <sub>3</sub>
5.1		A <sub>3</sub>	A <sub>3</sub>	A <sub>3</sub>	A <sub>3</sub>
5.2		X	X	X	X
6.1 liquids FP<23°C		X	X	X	X
6.1 liquids 23≤FP≤60 °C		X	X	X	X
6.1 liquids		X	X	X	X
6.1 solids		A	A	A	A
8 liquids FP<23°C		X	X	X	X
8 liquids 23≤FP≤60 °C		P <sub>5</sub>	P <sub>5</sub>	P <sub>5</sub>	P <sub>5</sub>
8 liquids		P <sub>6</sub>	P <sub>6</sub>	P <sub>6</sub>	P <sub>6</sub>
8 solids		A	A	A	A
9		A <sub>1</sub>	A <sub>1</sub>	A <sub>1</sub>	A <sub>1</sub>

Remarks related to information in the table as applicable: see annex

NOTE : Cargoes in bulk may be listed individually by name and class

DOCUMENT OF COMPLIANCE :  
NAME OF SHIP : ARKLOW MEADOW  
BV REGISTER : 12643U

Notes applicable for this document:

**Attention is also to be paid to stowage and segregation provisions of the IMDG Code**

- (1) Electrical equipment which is not essential for the safety and operation of the ship and which is not of a type approved for use in the considered area shall be:
  - completely disconnected by appropriate means other than fuses at a point external to the space
  - protected against unauthorized re-connection
- (2) Under the provision of IMDG Code, stowage of class 2.3 having subsidiary risk class 2.1 under deck or in enclosed ro-ro space is prohibited
- (3) **[specific for Bulk transport only]** Electrical equipment which is not essential for the safety and operation of the ship and which is not of a type approved for use in the considered area shall be:
  - completely disconnected by appropriate means other than fuses at a point external to the space
  - protected against unauthorized re-connection
- (4) Under the provision of IMDG Code, stowage of class 4.3 liquids having a flashpoint less than 23°C under deck or in enclosed ro-ro space is prohibited
- (5) Class 8 liquids 23≤FP≤60 °C having subsidiary risk class 6.1 are prohibited
- (6) Class 8 liquids having subsidiary risk class 6.1 are prohibited

Space identification:

Hold No.1: Cargo Hold No.1  
Hold No.2: Cargo Hold No.2  
Hold No.3: Cargo Hold No.3  
Hold No.4: Cargo Hold No.4