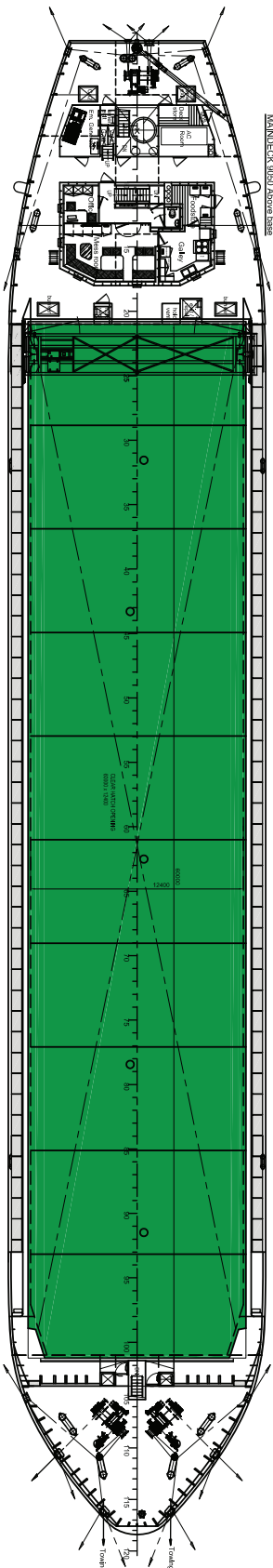
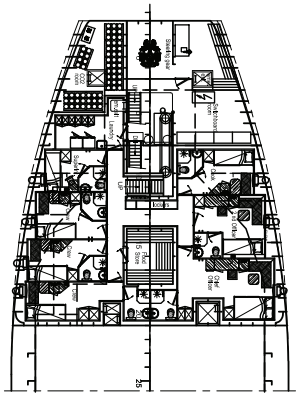


MAINDECK 0150 Above base

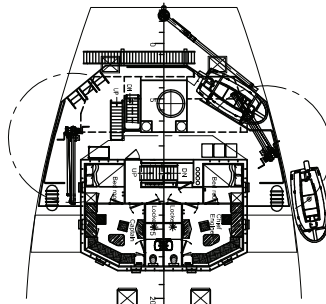


DECK 1200 Above base

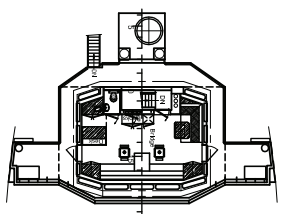
TWINDECK 0350 Above base



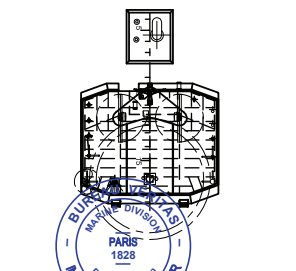
BOATDECK 1150 Above base



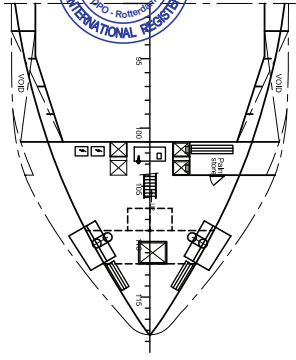
BRIDGEDECK 1420 Above base



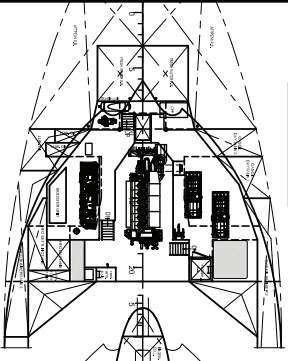
TOPECK 1880 Above base



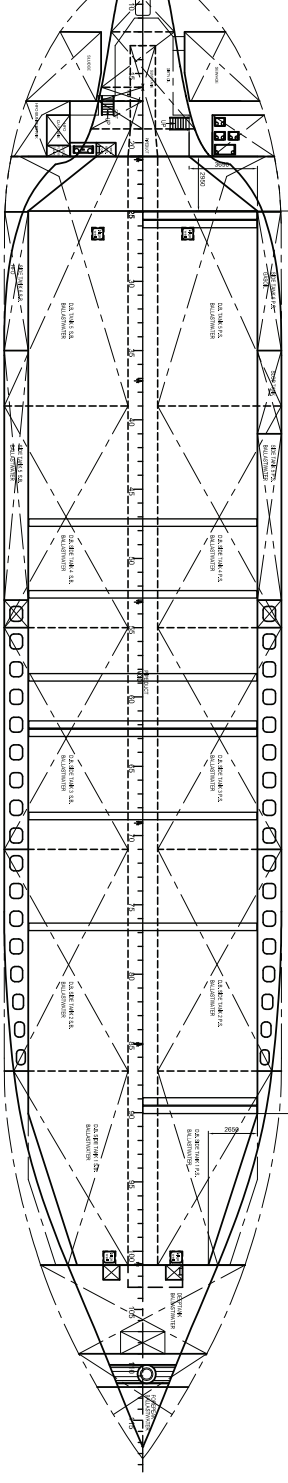
MAINDECK 2300 Above base



FUNDECK 3650 Above base



TANKTOP 1100 Above base



**MAIN PARTICULARS**

Length over all	86.83 m
Length between perpendiculars	84.88 m
Beam	12.50 m
Design draught	6.35 m
Displacement	abt. 5100 tm
Deadweight	abt. 5100 tm
Net capacity	221,000 dwt
Capacity area	55827 m <sup>2</sup>
Capacity (ISO 2000, 1993)	25892 TEU
Tank capacities - JFD	abt. 109 m <sup>3</sup>
Gasoil	abt. 58 m <sup>3</sup>
Fresh water	abt. 37 m <sup>3</sup>
Ballastwater	abt. 1870 m <sup>3</sup>
Main Engine - Main EN25	1740 kW
Tail Shaft	abt. 12.5 m

\* 2.00 m ballastwater tank on board

08-07-2015

**BODENES**  
 SOFAL  
 General Arrangement 5100 Dwt  
 1740 kW  
 12.5 m