

M.V. Arklow Vale

Port of Registry	Rotterdam, The Netherlands	Yard	Royal Bodewes Shipyard
Call Sign	PCZV	Year of Build	2015
IMO No.	9772527	Class	Bureau Veritas
MMSI No	244750645	Class Notation	Class 1, Hull, Mach, AUT-UMS, IWS, Strength bottom, Heavy Cargo, General Cargo
Inmarsat-C (telex)	424401224 424401225	Class No.	27825W
Email	avale@ipsignature3.net	Official No.	00000 Z 2015
GSM telephone (Dutch)	+31652021861		



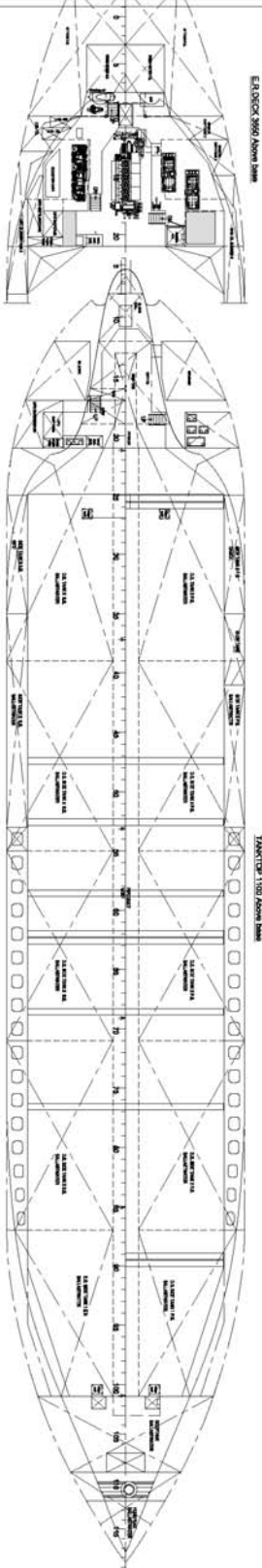
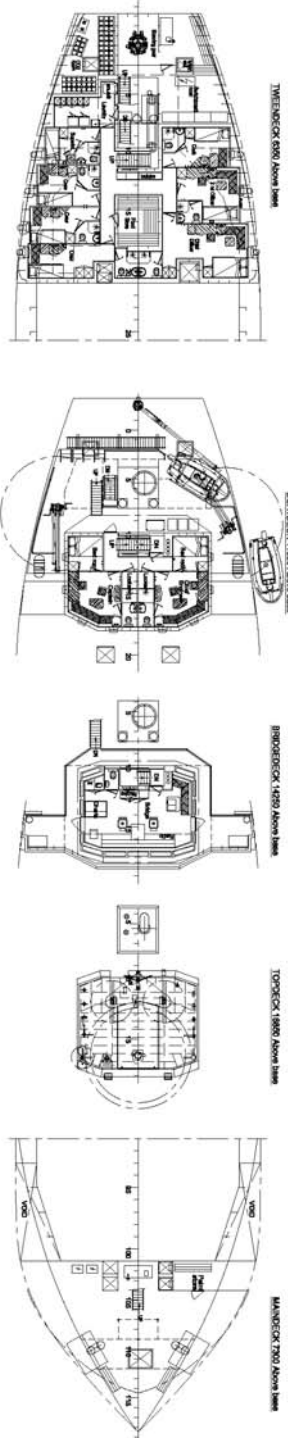
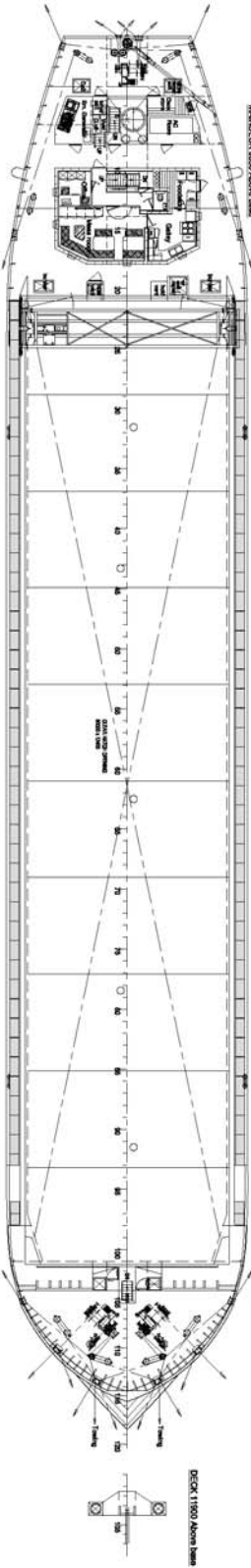
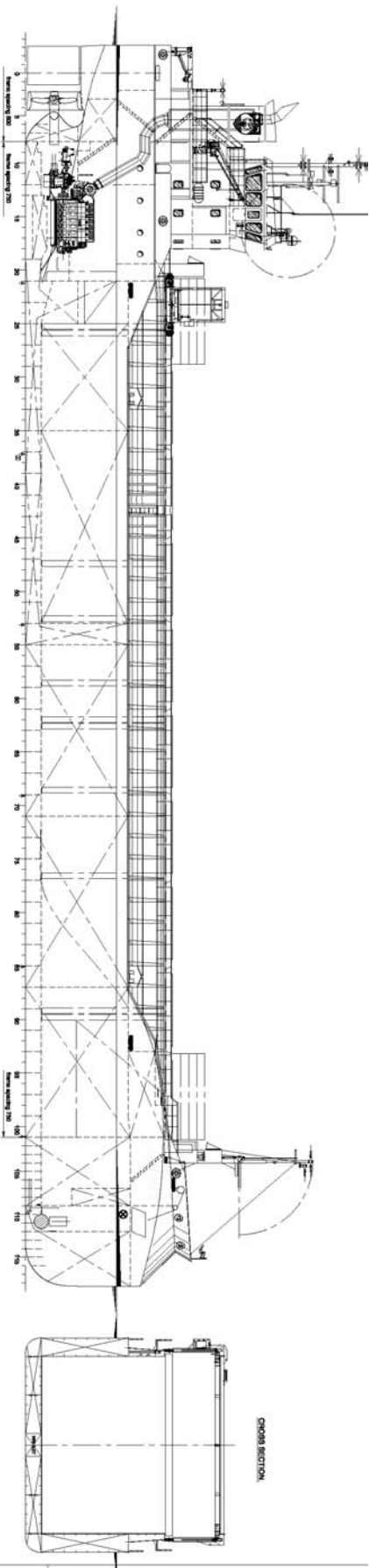
Principal Particulars

Length OA	86.93m	Hold Capacities Grain & Bale		Main Engine:	MaK 6M25 1740 kW with Siemens Gearbox and Berg controllable pitch propeller
Length	82.84m		m³ ft³	Auxiliaries:	2 x Sisu Diesel 154kW 1500 rpm
Breadth	15.00m	hold	6.258 221.000	Generators:	2 x Aux generator 154kW
Depth	7.17m	Portable bulkhead may be placed in 8 positions for cargo separation and storage position			1 x Emergency Generator 66kW
Summer Load Draft (m)	6.35m			1 x shaft alternator 348kW	Speed: abt. 12.5 knots
Min. air draft is	18.25m	Hatches: Coops & Nieborg pontoon system		Consumption:	In port – abt. 0,5 t Gas Oil per day
at max. summer draft of	6.35m	Maximum hatch top loading	1.75t/m ²	At sea – abt. 7 t HFO per day	
Min. coaming ht above WL	3.39m	Maximum tank top loading	15mt/m ²	Equipment	GMDSS (A3), 2x radars, navtex, Echo sounder, speed/distance log
GT	2999t	Bottom strengthened for loading aground Tank top strengthened for heavy cargoes			2x GPS receivers, A/P, ECDIS, gyro/magnetic compasses,
NT	1731t	CO ₂ fire extinguishing system in hold		1x electric bowthrustrer 300 kW	
Displacement	t	Engine room fitted with CO ₂ and LAFF			
Total Deadweight	5100t	Certified for the carriage of dangerous goods of IMO Class 1.4, 2.1, 2.2, 2.3, 3, 4.1, 4.2, 5.1, 6.1, 8 and 9			
Ballast	1870m ³				
Fuel – HFO	109m ³				
Fuel – GO	95m ³				
Fresh Water	32m ³				
Lub Oil	11m ³				

05/11/2015

E. & O. E.

M.V. ARKLOW VALE



MAIN PARTICULARS

Length over all 88.00 m.
 Length between perpendiculars 65.00 m.
 Breadth over all 14.00 m.
 Breadth moulded 13.70 m.
 Draught forward 4.60 m.
 Draught aft 5.00 m.
 * Draught amidships 4.80 m.

* Total capacity 297,000 cwt.
 * Gross tonnage 2999 GT.
 * Net tonnage 1980

Tank capacities: 1170 m³ oil
 108 m³ water
 357 m³ fuel oil
 1070 m³ ballast water

Main Engine: MAN B&W 1740 W.
 1410 kW. 45.8 hp.
 * Consumption: 30.00 ton

14-04-2015

BODENVER

Central Arrangement 1100 Deck

721-000-001 / F